

THE ROCKET

WHERE THE ACTION IS

May 23 - May 25, 2023

SECTION

Leading Rocket Member Publications

Avoca Journal Herald • 888-343-2154
 Dunlap Reporter • 642-2791
 Harlan Newspapers • 712-755-3111
 800-909-6397
 Mapleton Press • 881-1101
 Covering Charter Oak, Schleswig & Ute

Oakland Herald
 888-343-2154
 Missouri Valley Times
 642-2791
 Harrison County Merchandiser
 642-2791

Coverage also includes Denison & Crawford County,
 Manilla, Manning, Woodbine & Logan,
 Pottawattamie County & Council Bluffs rural routes

FREE

Edwards BARGAIN CENTER

**Largest Selection of Cars
 Under \$5,000 In The Area!**
www.edwardsautogroup.com

**1011 34th Avenue
 Lake Manawa Exit
 Council Bluffs, IA
 712-256-5858**

BANK FINANCING

Available on Most Vehicles, with approved credit

Stock #	Vehicle	Miles	Price
ZN230541B	2007 Lincoln MKZ Base	156,099	\$1,400
ZE10818B	2004 Pontiac Grand Am SE1	273,751	\$1,450
ZVJ506532C	2005 GMC Envoy SLE	176,506	\$1,500
ZX29770B	2005 Dodge Grand Caravan SXT	231,860	\$1,590
ZK230604B	2007 Pontiac G6 Base	236,375	\$1,700
ZJ04179A	2000 Jeep Grand Cherokee Laredo	198,359	\$1,850
ZH61127C	2004 Ford Expedition Eddie Bauer	219,323	\$1,890
ZK230770B	2009 Dodge Grand Caravan SXT	227,037	\$2,000
ZX30101B	2005 Ford Escape XLT	176,589	\$2,000
ZK23012B	2006 Mazda Mazda3 i Base	202,606	\$2,250
ZXN222013C	2001 Mercedes-Benz M-Class	254,224	\$2,320
ZK230854B	2005 Dodge Neon SXT	205,646	\$2,400
ZN230762A	2006 Volvo S60 2.5T	180,367	\$2,500
ZBJN72335B	2008 Ford Escape XLT	204,052	\$2,500
ZC12545B	2002 Buick LeSabre Custom	234,800	\$2,700
ZVR444894A	1999 Dodge Ram 1500 ST	354,000	\$2,700
ZJV531289C	2005 Scion tC Base	201,735	\$2,800
ZC45784B	2001 Chevrolet Cavalier LS	178,589	\$2,800
ZJH10712D	2004 Pontiac Grand Prix GT1	266,562	\$2,900
ZV576740S	2005 Chrysler Town & Country LX	278,838	\$2,900
ZJ2163C	2005 Chrysler Town & Country	274,587	\$2,900
ZJ04955B	2004 Chevrolet Impala LS	204,832	\$2,900
ZE10708B	1999 Jeep Grand Cherokee Limited	227,364	\$2,900
ZC45533P	1994 Chevrolet C/K 1500 Cheyenne	262,067	\$2,900
ZH61323A	2003 Mercedes-Benz C-Class	190,896	\$2,900
ZJ04057B	2007 Dodge Charger SE	114,062	\$2,900
ZC12616B	2004 Honda Odyssey EX-L	195,631	\$3,500
ZV517083B	1997 Ford Mustang V6	228,155	\$3,500
ZJH10590B	2001 Chevrolet Suburban 1500 LT	247,240	\$3,500
ZK12577B	2005 GMC Yukon XL SLT 1500	218,029	\$3,500
ZJK230222B	2008 Dodge Nitro SXT	195,785	\$3,500
ZBJ513521B	2012 Ford Escape XLS	294,149	\$3,501
ZV541446B	2009 Chevrolet Aveo5 1LT	79,800	\$3,520
ZH613363B	2005 Pontiac Grand Prix Base	258,573	\$3,601
ZK230780A	2009 Hyundai Sonata GLS V6	231,598	\$3,700
ZH61475B	2006 Hyundai Sonata GLS V6	147,859	\$3,900
ZKHC12555D	2004 Pontiac Bonneville SE	161,941	\$3,900
ZNC12255C	2006 Volkswagen Beetle 2.5L	164,661	\$3,900
ZC12566B	2003 Nissan Altima 2.5 S	154,977	\$3,900
ZCA45612C	2002 Suzuki XL-7 Standard	198,884	\$3,900
ZH10653A	2008 Hyundai Santa Fe Limited	188,342	\$3,900
ZV201642B	2008 Jeep Grand Cherokee Limited	226,987	\$3,900
ZJ2144C	2004 Chevrolet Impala Base	189,575	\$3,901
ZN230910A1	2009 Hyundai Sonata Limited	145,592	\$3,995
ZX30060A	2010 Chrysler PT Cruiser Classic	143,124	\$4,300
ZB440887B	2003 Volkswagen Passat GLS	138,728	\$4,700
ZH10622A	2003 Toyota Camry XLE	215,189	\$4,701
ZH10724A	2006 Chevrolet TrailBlazer LS	236,618	\$4,720
ZV659525B	2002 Toyota Highlander V6	148,055	\$4,900
ZK230673A	2008 Chevrolet Malibu LT	177,208	\$4,900
ZK230627A	1999 Subaru Legacy Outback	179,822	\$4,900
ZV320517D	1989 Chevrolet Suburban Silverado		\$4,900
ZH61379B	2009 Chevrolet Malibu LT 1LT	192,339	\$4,900
ZK230734C	2004 Dodge Intrepid SE	124,805	\$4,900
ZH10717B	2008 Hyundai Entourage GLS	151,593	\$4,900
ZV518664B	2004 Jeep Grand Cherokee Laredo	188,728	\$4,900
ZN230296C	1997 Dodge Dakota	194,133	\$4,900
ZH10718A	2006 Subaru Impreza 2.5i	187,381	\$4,900
ZJ04081A	2015 Nissan Altima 2.5 S	170,540	\$4,900
ZHJ03952B	2006 Hyundai Tucson GL	137,884	\$4,900
ZH61245A	2011 Mazda Mazda3 i Sport	110,803	\$4,900
ZAJ137637B	2004 Chevrolet Tahoe Z71	242,379	\$4,901
ZC45616P	2005 Ford F-150	157,326	\$5,500
ZH61468A	2009 Hyundai Sonata GLS	120,436	\$5,501
ZJ03848B	2005 Honda Accord LX 2.4	139,389	\$5,501

Stock #	Vehicle	Miles	Price
ZC45894	1998 Honda Civic LX	198,934	\$5,700
ZK230987A	2012 Kia Forte EX	126,770	\$5,900
ZB562889B	2011 Nissan Rogue SV	180,603	\$5,900
ZE10855A	1994 Buick Park Avenue Base	130,922	\$5,900
ZBJN79072B	1995 Toyota 4Runner SR5	229,156	\$5,900
ZJC12564B	2011 Chevrolet Equinox LT 2LT	161,837	\$5,900
ZE10662A	2008 Ford F-150	143,164	\$5,900
ZXNC45377B	2014 Nissan Rogue SV	143,885	\$5,900
ZN230678A	2006 Scion xA Base	79,781	\$5,901
ZM61264A	2012 Kia Sedona LX	143,530	\$5,901
ZH10635C	2012 Fiat 500 Pop	64,199	\$5,995
ZVR412161D	2007 Honda Civic EX	151,466	\$6,501
ZV553152B	2015 Jeep Patriot Sport	144,728	\$6,520
ZJBR440932E	2013 Nissan Altima 2.5 SL	140,414	\$6,700
ZJ03516C	2011 Chevrolet Traverse 2LT 2LT	83,194	\$6,800
ZV756719C	2010 Ford Flex Limited w/EcoBoost	209,182	\$6,900
ZH61588A	2009 Hyundai Azera Limited	131,886	\$6,900
ZK230733B	2017 Nissan Sentra S	125,719	\$6,900
ZN30029B	2005 Chevrolet Tahoe Z71	100,000	\$6,900
ZH61412A	2012 Hyundai Sonata GLS	150,768	\$6,900
ZH10810A	2002 GMC Sierra 1500 SLE	397,861	\$6,900
ZJC12565D	2007 Cadillac Escalade ESV Base	195,275	\$6,900
ZJC12565E	2010 Chevrolet Silverado 1500 LT	235,152	\$6,900
ZK230747A	2009 Nissan Rogue SL	135,943	\$6,900
ZH10720A	2012 Chevrolet Equinox LT 1LT	140,729	\$6,900
ZC12453B	2015 Ford Focus S	107,437	\$6,900
ZJ12527A	2015 Volkswagen Beetle 1.8T	118,530	\$6,901
ZH10800B2	1999 Honda CR-V EX	117,379	\$6,920
ZH10869A	2000 Toyota Camry LE	126,797	\$7,500
ZN230992A	2011 Ford Edge SEL	125,256	\$7,500
ZH61375B	2012 Honda Odyssey EX-L	191,269	\$7,500
ZAPA69991C	2006 Ford F-150 XLT	112,243	\$7,800
ZN230488B	2011 Volkswagen Jetta TDI 2.0	154,069	\$7,820
ZB117317B	2010 Honda Accord EX 2.4	186,951	\$7,900
ZN230919A	2016 Nissan Versa 1.6 S		\$7,900
ZC45942A	2014 Chevrolet Equinox LTZ	157,133	\$7,900
ZV539113PB	2014 Ford Focus SE	127,405	\$7,900
ZD10633A	1999 GMC Sonoma SLS	188,584	\$7,999
ZB567278B	2003 Land Rover Discovery SE	180,833	\$8,520
ZN2301014A	2011 Jeep Grand Cherokee Laredo	179,014	\$8,900
ZK230921A	2013 Chevrolet Cruze 1LT	99,492	\$8,900
ZV588499B	2010 Jeep Liberty Sport	116,527	\$8,900
ZK230876A	2012 Volkswagen Eos Komfort Ed.	113,525	\$8,990
ZC45712A	2016 Chevrolet Trax LS	96,877	\$8,999
ZVJ506533B	2010 GMC Sierra 1500 SLE	177,111	\$9,500
ZN230774B	2013 GMC Acadia SLT-1	126,554	\$9,800
ZE10816A	2016 Dodge Grand Caravan AVP	139,465	\$9,800
ZN230315B	2018 Nissan Rogue S	129,374	\$9,800
ZV530138A	2008 Dodge Ram 1500 SLT	114,514	\$9,900
ZBH10679B	2006 Dodge Ram 1500 SLT	140,375	\$9,900
ZE10815A	2015 Nissan Rogue S	118,341	\$10,520
ZH10703B	2013 Volkswagen Jetta TDI 2.0	100,921	\$10,900
ZK230878A	2014 Ford Flex Limited	138,448	\$10,900
ZVC45564C	2004 Chevrolet Silverado 2500 LS	169,770	\$10,900
ZCZC12499D	2012 Ford Expedition Limited	160,982	\$10,900
ZK230817A	2012 Honda Odyssey EX-L	155,890	\$10,900
ZJ2162C	2016 Dodge Grand Caravan SXT	118,767	\$10,900
ZC45162B	2015 Chrysler 200 C	102,273	\$10,900
ZK230960A	2008 Chevrolet Suburban 1500 LT	149,278	\$11,500
ZC45813A	2016 Buick Verano Convenience Gr.	98,839	\$11,500
ZE10835A	2009 Chevrolet HHR SS	109,703	\$11,820
ZV821776A	2014 Lincoln MKT EcoBoost	121,483	\$11,900
ZVB99995A	2009 Ford F-150 XLT	146,435	\$11,900
ZE10833A	2014 Honda Civic LX	152,112	\$11,900
ZC45840A	2005 Dodge Ram 2500 SLT	226,594	\$11,900

Stock #	Vehicle	Miles	Price
ZH10795A	2010 Honda CR-V EX	141,049	\$11,959
ZN230798A1	2012 Jeep Grand Cherokee Laredo	124,176	\$12,300
ZJ04938B	2015 Chevrolet Equinox LTZ	86,994	\$12,900
ZXZC12603B	2017 Dodge Grand Caravan SE	95,190	\$12,900
ZH10738B	2018 Mitsubishi Outlander ES	136,501	\$13,800
ZB293658A	2014 Chrysler Town & Country	91,455	\$13,900
ZVJ519454P	2015 Jeep Patriot Sport	51,461	\$13,900
ZC45441B	2009 Chevrolet Silverado 3500HD	319,536	\$13,900
ZB575541A	2011 Jeep Wrangler Sport	102,971	\$14,500
ZM61265B	2016 Hyundai Tucson SE	100,585	\$14,900
ZH10756A	2014 Ford Fusion SE	61,804	\$15,899
Z10861A	2007 GMC Sierra 2500HD SLE1	155,545	\$15,900
ZV731911DB	2015 Mazda CX-5 Grand Touring	118,128	\$15,900
ZE10841A	2012 Honda CR-V EX-L	118,501	\$15,900
ZK230779A1	2014 Jeep Wrangler Unlimited	129,695	\$15,900
ZJ04870A	2018 Hyundai Tucson SEL	128,584	\$15,900
ZV795338PB	2016 Chrysler Town & Country	98,681	\$15,900
ZB547726A	2015 Ford F-150 Lariat	273,474	\$15,900
ZVX90642A	2015 Ram ProMaster City Base	101,275	\$15,901
ZE10852A	2010 Ford Explorer Sport Trac Ltd.	60,295	\$16,900
ZV571744A	2011 Mercedes-Benz Sprinter 2500	123,844	\$16,900
ZE10853A	2018 Volkswagen Jetta GLI 2.0	53,331	\$17,500
ZJ04072B	2011 Ford F-250SD Lariat	268,599	\$18,500
ZN230909A	2020 Chevrolet Trax LS	31,682	\$18,900
ZV510497PB	2018 Jeep Grand Cherokee Laredo	152,793	\$18,900
ZE10770B	2003 Chevrolet Silverado 1500 SS	108,135	\$18,920
ZE10822A	2011 Porsche Cayenne S	103,076	\$19,900
ZV031561B	2009 Ford F-250SD Lariat	142,279	\$20,900
ZC45798A	2015 Chevrolet Silverado 2500HD	188,918	\$21,900
ZV155761A	2013 Chevrolet Silverado 2500HD	95,060	\$22,900
ZC45787A	2009 Dodge Challenger SRT8	31,054	\$23,901
ZJZCE12438	2008 Chevrolet Silverado 2500HD	75,565	\$24,900
ZE10854A	2016 Ram 1500 Big Horn	119,699	\$25,900
ZJ04786A	2021 Ram ProMaster 3500	142,857	\$25,900
ZV59168A	2018 Ford F-150 XLT	100,464	\$26,900
ZB916995A	2016 Chevrolet Tahoe LT	116,244	\$28,920
ZV617671PA	2018 Chevrolet Silverado 1500 LT	136,211	\$29,900
ZB543658A	2017 Ford F-150 Platinum	125,065	\$34,900
ZJE12618A	2015 Jeep Renegade Latitude	80,118	
ZV594253PA	2015 Jeep Grand Cherokee Laredo	110,334	
ZV576833PB	2011 Ram 1500 Big Horn	174,444	
ZVE04718A	2016 Jeep Renegade Trailhawk	74,109	
ZVN85986Q	2016 Ram 1500 Big Horn	130,000	
ZN30228A	2011 Porsche Cayenne S	125,530	
ZV788988PB	2012 Jeep Grand Cherokee Laredo	133,131	
ZV558318A	2009 Dodge Ram 1500 ST	145,658	
ZV581356B	2009 Lincoln MKS Base	99,303	
ZK231001A	2005 Lexus RX 330	151,968	
ZV542420A	2000 Dodge Dakota	187,648	
ZX30153A	2010 Mazda CX-7 s Touring	122,815	
ZK230994A	2012 Honda CR-V EX	146,486	
ZK230971A	2011 Honda Accord EX-L 2.4	185,540	
ZB692784C	2008 Mercury Sable Premier	182,658	
ZC45789A	2018 Chevrolet Silverado 1500 LT	162,685	
ZXZC12026C	2009 Buick Enclave CXL	183,330	
ZC45986B	2009 Nissan Murano LE	178,551	
ZV737537E	2015 Jeep Patriot Altitude	114,066	
ZH61535B	2016 Hyundai Tucson SE	120,871	
ZCC45764A	2014 Kia Sedona LX	163,545	
ZH10637F	2016 Chevrolet Malibu LT 1LT	125,512	
ZH10800B1	2015 Cadillac Escalade Premium	137,706	
ZM60994A	2015 Dodge Dart Limited	47,515	
ZH10745A	2017 Hyundai Sonata Base	127,904	
ZH61469A	2018 Kia Rio S	80,225	
ZH10798A	1999 Toyota RAV4 Base	193,937	

CALL FOR PRICES



'10 HONDA ACCORD
 #ZB117317B, 186K **\$6,720**



'16 BUICK VERANO
 #ZC45813A **\$8,920**



'14 LINCOLN MKT
 #ZV821776A, 121K **\$10,820**



'15 CHEVY SILVERADO 2500HD LTZ
 #ZC45798A, 188K **\$17,720**

THE ROCKET

WHERE THE ACTION IS

May 23 - May 25, 2023

SECTION

Leading Rocket Member Publications

Avoca Journal Herald • 888-343-2154
 Dunlap Reporter • 642-2791
 Harlan Newspapers • 712-755-3111
 800-909-6397
 Mapleton Press • 881-1101
 Covering Charter Oak, Schleswig & Ute

Oakland Herald
 888-343-2154
 Missouri Valley Times
 642-2791
 Harrison County Merchandiser
 642-2791

Coverage also includes Denison & Crawford County,
 Manilla, Manning, Woodbine & Logan,
 Pottawattamie County & Council Bluffs rural routes

FREE

Edwards BARGAIN CENTER

**Largest Selection of Cars
 Under \$5,000 In The Area!**

www.edwardsautogroup.com

BANK FINANCING

Available on Most Vehicles, with approved credit

**1011 34th Avenue
 Lake Manawa Exit
 Council Bluffs, IA
 712-256-5858**

Stock #	Vehicle	Miles	Price	Stock #	Vehicle	Miles	Price	Stock #	Vehicle	Miles	Price
ZN230541B	2007 Lincoln MKZ Base	156,099	\$1,400	ZC45894	1998 Honda Civic LX	198,934	\$5,700	ZH10795A	2010 Honda CR-V EX	141,049	\$11,959
ZE10818B	2004 Pontiac Grand Am SE1	273,751	\$1,450	ZK230987A	2012 Kia Forte EX	126,770	\$5,900	ZN230798A1	2012 Jeep Grand Cherokee Laredo	124,176	\$12,300
ZVJ506532C	2005 GMC Envoy SLE	176,506	\$1,500	ZB562889B	2011 Nissan Rogue SV	180,603	\$5,900	ZJ04938B	2015 Chevrolet Equinox LTZ	86,994	\$12,900
ZK230770B	2005 Dodge Grand Caravan SXT	231,860	\$1,590	ZE10855A	1994 Buick Park Avenue Base	130,922	\$5,900	ZXZC12603B	2017 Dodge Grand Caravan SE	95,190	\$12,900
ZK230604B	2007 Pontiac G6 Base	236,375	\$1,700	ZBJN79072B	1995 Toyota 4Runner SR5	229,156	\$5,900	ZH10738B	2018 Mitsubishi Outlander ES	136,501	\$13,800
ZJ04179A	2000 Jeep Grand Cherokee Laredo	198,359	\$1,850	ZJC12564B	2011 Chevrolet Equinox LT 2LT	161,837	\$5,900	ZB293658A	2014 Chrysler Town & Country	91,455	\$13,900
ZH61127C	2004 Ford Expedition Eddie Bauer	219,323	\$1,890	ZE10662A	2008 Ford F-150	143,164	\$5,900	ZVJ519454P	2015 Jeep Patriot Sport	51,461	\$13,900
ZK230854B	2009 Dodge Grand Caravan SXT	227,037	\$2,000	ZXNC45377B	2014 Nissan Rogue SV	143,885	\$5,900	ZC45441B	2009 Chevrolet Silverado 3500HD	319,536	\$13,900
ZX30101B	2005 Ford Escape XLT	176,589	\$2,000	ZN230678A	2006 Scion xA Base	79,781	\$5,901	ZB575541A	2011 Jeep Wrangler Sport	102,971	\$14,500
ZK23012B	2006 Mazda Mazda3 i Base	202,606	\$2,250	ZM61264A	2012 Kia Sedona LX	143,530	\$5,901	ZM61265B	2016 Hyundai Tucson SE	100,585	\$14,900
ZXN222013C	2001 Mercedes-Benz M-Class	254,224	\$2,320	ZH10635C	2012 Fiat 500 Pop	64,199	\$5,995	ZH10756A	2014 Ford Fusion SE	61,804	\$15,899
ZK230854B	2005 Dodge Neon SXT	205,646	\$2,400	ZVR412161D	2007 Honda Civic EX	151,466	\$6,501	Z10861A	2007 GMC Sierra 2500HD SLE1	155,545	\$15,900
ZN230762A	2006 Volvo S60 2.5T	180,367	\$2,500	ZV553152B	2015 Jeep Patriot Sport	144,728	\$6,520	ZV731911DB	2015 Mazda CX-5 Grand Touring	118,128	\$15,900
ZBJN72335B	2008 Ford Escape XLT	204,052	\$2,500	ZJBR440932E	2013 Nissan Altima 2.5 SL	140,414	\$6,700	ZE10841A	2012 Honda CR-V EX-L	118,501	\$15,900
ZC12545B	2002 Buick LeSabre Custom	234,800	\$2,700	ZJ03516C	2011 Chevrolet Traverse 2LT 2LT	83,194	\$6,800	ZK230779A1	2014 Jeep Wrangler Unlimited	129,695	\$15,900
ZVR444894A	1999 Dodge Ram 1500 ST	354,000	\$2,700	ZV756719C	2010 Ford Flex Limited w/EcoBoost	209,182	\$6,900	ZJ04870A	2018 Hyundai Tucson SEL	128,584	\$15,900
ZJV531289C	2005 Scion tC Base	201,735	\$2,800	ZH61588A	2009 Hyundai Azera Limited	131,886	\$6,900	ZV795338PB	2016 Chrysler Town & Country	98,681	\$15,900
ZC45784B	2001 Chevrolet Cavalier LS	178,589	\$2,800	ZK230733B	2017 Nissan Sentra S	125,719	\$6,900	ZB547726A	2015 Ford F-150 Lariat	273,474	\$15,900
ZJH10712D	2004 Pontiac Grand Prix GT1	266,562	\$2,900	ZN30029B	2005 Chevrolet Tahoe Z71	100,000	\$6,900	ZVX90642A	2015 Ram ProMaster City Base	101,275	\$15,901
ZV576740S	2005 Chrysler Town & Country LX	278,838	\$2,900	ZH61412A	2012 Hyundai Sonata GLS	150,768	\$6,900	ZE10852A	2010 Ford Explorer Sport Trac Ltd.	60,295	\$16,900
ZJ2163C	2005 Chrysler Town & Country	274,587	\$2,900	ZH10810A	2002 GMC Sierra 1500 SLE	397,861	\$6,900	ZV571744A	2011 Mercedes-Benz Sprinter 2500	123,844	\$16,900
ZJ04955B	2004 Chevrolet Impala LS	240,832	\$2,900	ZJC12565D	2007 Cadillac Escalade ESV Base	195,275	\$6,900	ZE10853A	2018 Volkswagen Jetta GLI 2.0	53,331	\$17,500
ZE10708B	1999 Jeep Grand Cherokee Limited	227,364	\$2,900	ZJC12565E	2010 Chevrolet Silverado 1500 LT	235,152	\$6,900	ZJ04072B	2011 Ford F-250SD Lariat	268,579	\$18,500
ZC45533P	1994 Chevrolet C/K 1500 Cheyenne	262,067	\$2,900	ZK230747A	2009 Nissan Rogue SL	135,943	\$6,900	ZN230909A	2020 Chevrolet Trax LS	31,682	\$18,900
ZH61323A	2003 Mercedes-Benz C-Class	190,896	\$2,900	ZH10720A	2012 Chevrolet Equinox LT 1LT	140,729	\$6,900	ZV510497PB	2018 Jeep Grand Cherokee Laredo	152,793	\$18,900
ZJ04057B	2007 Dodge Charger SE	114,062	\$2,900	ZC12453B	2015 Ford Focus S	107,437	\$6,900	ZE10770B	2003 Chevrolet Silverado 1500 SS	108,135	\$18,920
ZC12616B	2004 Honda Odyssey EX-L	195,631	\$3,500	ZJ12527A	2015 Volkswagen Beetle 1.8T	118,530	\$6,901	ZE10822A	2011 Porsche Cayenne S	103,076	\$19,900
ZV517083B	1997 Ford Mustang V6	228,155	\$3,500	ZH10800B2	1999 Honda CR-V EX	117,379	\$6,920	ZV031561B	2009 Ford F-250SD Lariat	142,279	\$20,900
ZJH10590B	2001 Chevrolet Suburban 1500 LT	247,240	\$3,500	ZH10869A	2000 Toyota Camry LE	126,797	\$7,500	ZC45798A	2015 Chevrolet Silverado 2500HD	188,918	\$21,900
ZK12577B	2005 GMC Yukon XL SLT 1500	218,029	\$3,500	ZN230992A	2011 Ford Edge SEL	125,256	\$7,500	ZV155761A	2013 Chevrolet Silverado 2500HD	95,060	\$22,900
ZK230222B	2008 Dodge Nitro SXT	195,785	\$3,500	ZH61375B	2012 Honda Odyssey EX-L	191,269	\$7,500	ZC45787A	2009 Dodge Challenger SRT8	31,054	\$23,901
ZBJ513521B	2012 Ford Escape XLS	294,149	\$3,501	ZAPA69991C	2006 Ford F-150 XLT	112,243	\$7,800	ZJZCE12438	2008 Chevrolet Silverado 2500HD	75,565	\$24,900
ZV541446B	2009 Chevrolet Aveo5 1LT	79,800	\$3,520	ZN230488B	2011 Volkswagen Jetta TDI 2.0	154,069	\$7,820	ZE10854A	2016 Ram 1500 Big Horn	119,699	\$25,900
ZH613363B	2005 Pontiac Grand Prix Base	258,573	\$3,601	ZB117317B	2010 Honda Accord EX 2.4	186,951	\$7,900	ZJ04786A	2021 Ram ProMaster 3500	142,857	\$25,900
ZK230780A	2009 Hyundai Sonata GLS V6	231,598	\$3,700	ZN230919A	2016 Nissan Versa 1.6 S	17,900	\$7,900	ZV59168A	2018 Ford F-150 XLT	100,464	\$26,900
ZH61475B	2006 Hyundai Sonata GLS V6	147,859	\$3,900	ZC45942A	2014 Chevrolet Equinox LTZ	157,133	\$7,900	ZB916995A	2016 Chevrolet Tahoe LT	116,244	\$28,920
ZKHC12555D	2004 Pontiac Bonneville SE	161,941	\$3,900	ZV539113PB	2014 Ford Focus SE	127,405	\$7,900	ZV617671PA	2018 Chevrolet Silverado 1500 LT	136,211	\$29,900
ZNC12255C	2006 Volkswagen Beetle 2.5L	164,661	\$3,900	ZD10633A	1999 GMC Sonoma SLS	188,584	\$7,999	ZB543658A	2017 Ford F-150 Platinum	125,065	\$34,900
ZC12566B	2003 Nissan Altima 2.5 S	154,977	\$3,900	ZB567278B	2003 Land Rover Discovery SE	180,833	\$8,520	ZJE12618A	2015 Jeep Renegade Latitude	80,118	
ZCA45612C	2002 Suzuki XL-7 Standard	198,884	\$3,900	ZN2301014A	2011 Jeep Grand Cherokee Laredo	179,014	\$8,900	ZV594253PA	2015 Jeep Grand Cherokee Laredo	110,334	
ZH10653A	2008 Hyundai Santa Fe Limited	188,342	\$3,900	ZK230921A	2013 Chevrolet Cruze 1LT	99,492	\$8,900	ZV576833PB	2011 Ram 1500 Big Horn	174,444	
ZV201642B	2008 Jeep Grand Cherokee Limited	226,987	\$3,900	ZV588499B	2010 Jeep Liberty Sport	116,527	\$8,900	ZVE04718A	2016 Jeep Renegade Trailhawk	74,109	
ZJ2144C	2004 Chevrolet Impala Base	189,575	\$3,901	ZK230876A	2012 Volkswagen Eos Komfort Ed.	113,525	\$8,990	ZVN85986Q	2016 Ram 1500 Big Horn	130,000	
ZN230910A1	2009 Hyundai Sonata Limited	145,592	\$3,995	ZC45712A	2016 Chevrolet Trax LS	96,877	\$8,999	ZN30228A	2011 Porsche Cayenne S	125,530	
ZX30060A	2010 Chrysler PT Cruiser Classic	143,124	\$4,300	ZVJ506533B	2010 GMC Sierra 1500 SLE	177,111	\$9,500	ZV788988PB	2012 Jeep Grand Cherokee Laredo	133,131	
ZB440887B	2003 Volkswagen Passat GLS	138,728	\$4,700	ZN230774B	2013 GMC Acadia SLT-1	126,554	\$9,800	ZV558318A	2009 Dodge Ram 1500 ST	145,658	
ZH10622A	2003 Toyota Camry XLE	215,189	\$4,701	ZE10816A	2016 Dodge Grand Caravan AVP	139,465	\$9,800	ZV581356B	2009 Lincoln MKS Base	99,303	
ZH10724A	2006 Chevrolet TrailBlazer LS	236,618	\$4,720	ZN230315B	2018 Nissan Rogue S	129,374	\$9,800	ZK231001A	2005 Lexus RX 330	151,968	
ZV659525B	2002 Toyota Highlander V6	148,055	\$4,900	ZV530138A	2008 Dodge Ram 1500 SLT	114,514	\$9,900	ZV542420A	2000 Dodge Dakota	187,648	
ZK230673A	2008 Chevrolet Malibu LT	177,208	\$4,900	ZBH10679B	2006 Dodge Ram 1500 SLT	140,375	\$9,900	ZX30153A	2010 Mazda CX-7 s Touring	122,815	
ZK230627A	1999 Subaru Legacy Outback	179,822	\$4,900	ZE10815A	2015 Nissan Rogue S	118,341	\$10,520	ZK230994A	2012 Honda CR-V EX	146,486	
ZV320517D	1989 Chevrolet Suburban Silverado		\$4,900	ZH10703B	2013 Volkswagen Jetta TDI 2.0	100,921	\$10,900	ZK230971A	2011 Honda Accord EX-L 2.4	185,540	
ZH61379B	2009 Chevrolet Malibu LT 1LT	192,339	\$4,900	ZK230878A	2014 Ford Flex Limited	138,448	\$10,900	ZB692784C	2008 Mercury Sable Premier	182,658	
ZK230734C	2004 Dodge Intrepid SE	124,805	\$4,900	ZVC45564C	2004 Chevrolet Silverado 2500 LS	169,770	\$10,900	ZC45789A	2018 Chevrolet Silverado 1500 LT	162,685	
ZH10717B	2008 Hyundai Entourage GLS	151,593	\$4,900	ZCZC12499D	2012 Ford Expedition Limited	160,982	\$10,900	ZXZC12026C	2009 Buick Enclave CXL	183,330	
ZV518664B	2004 Jeep Grand Cherokee Laredo	188,728	\$4,900	ZK230817A	2012 Honda Odyssey EX-L	155,890	\$10,900	ZC45986B	2009 Nissan Murano LE	178,551	
ZN230296C	1997 Dodge Dakota	194,133	\$4,900	ZJ2162C	2016 Dodge Grand Caravan SXT	118,767	\$10,900	ZV737537E	2015 Jeep Patriot Altitude	114,066	
ZH10718A	2006 Subaru Impreza 2.5i	187,381	\$4,900	ZC45162B	2015 Chrysler 200 C	102,273	\$10,900	ZH61535B	2016 Hyundai Tucson SE	120,871	
ZJ04081A	2015 Nissan Altima 2.5 S	170,540	\$4,900	ZK230960A	2008 Chevrolet Suburban 1500 LT	149,278	\$11,500	ZCC45764A	2014 Kia Sedona LX	163,545	
ZHJ03952B	2006 Hyundai Tucson GL	137,884	\$4,900	ZC45813A	2016 Buick Verano Convenience Gr.	98,839	\$11,500	ZH10637F	2016 Chevrolet Malibu LT 1LT	125,512	
ZH61245A	2011 Mazda Mazda3 i Sport	110,803	\$4,900	ZE10835A	2009 Chevrolet HHR SS	109,703	\$11,820	ZH10800B1	2015 Cadillac Escalade Premium	137,706	
ZAJ137637B	2004 Chevrolet Tahoe Z71	242,379	\$4,901	ZV821776A	2014 Lincoln MKT EcoBoost	121,483	\$11,900	ZM60994A	2015 Dodge Dart Limited	47,515	
ZC45616P	2005 Ford F-150	157,326	\$5,500	ZVB99995A	2009 Ford F-150 XLT	146,435	\$11,900	ZH10745A	2017 Hyundai Sonata Base	127,904	
ZH61468A	2009 Hyundai Sonata GLS	120,436	\$5,501	ZE10833A	2014 Honda Civic LX	152,112	\$11,900	ZH61469A	2018 Kia Rio S	80,225	
ZJ03848B	2005 Honda Accord LX 2.4	139,389	\$5,501	ZC45840A	2005 Dodge Ram 2500 SLT	226,594	\$11,900	ZH10798A	1999 Toyota RAV4 Base	193,937	

CALL FOR PRICES



'10 HONDA ACCORD
 #ZB117317B, 186K **\$6,720**



'16 BUICK VERANO
 #ZC45813A **\$8,920**



'14 LINCOLN MKT
 #ZV821776A, 121K **\$10,820**



'15 CHEVY SILVERADO 2500HD LTZ
 #ZC45798A, 188K **\$17,720**

SPECIALIZING IN QUALITY POST FRAME BUILDINGS



Commercial
Equestrian
Hobby Shops

Agricultural
Garages
And More!

Eastern CO 13540 Northgate Estates Dr. Suite 100D Colorado Springs, CO 80921 719-822-3052	Nebraska & Iowa 1903 Hwy. 30 Missouri Valley, IA 51555 402-426-5022 712-600-2410	Wisconsin N6522 US Hwy. 51 STE C1 Portage, WI 53901 608-988-6338 920-889-0960
--	---	--

GINGERICH
STRUCTURES



www.GingerichStructures.com



FARM/HOUSEHOLD/LAND

AUCTIONS

Auctioneers - your listings
also ARE on
HarlanOnline.com's free
online classified pages

May 21 – 12:30 pm, HH, Antique, Lawn & Shop Equipment, 311 4th Ave., Portsmouth, IA, Michael and Arlene Pauley, Owners. Osborn Auction LLC

May 26 – 10 am, Murlyn & Lillian Ronk Estate Real Estate Auction. Harrison & Douglas Townships, Harrison Co., Iowa. Sale Location: Dunlap Livestock Auction. Schaben Real Estate LLC.

May 31 – 10 am, Esser Revocable Trust Real Estate Auction. Cass Township, Harrison Co., Iowa. Sale Location: Crew Center, 601 Snyder Rd., Woodbine. Schaben Real Estate LLC.

June 1 – 10 a.m. Culver Exemption Trust Real Estate Auction. Harrison Township, Harrison Co., IA. Sale Location: Dunlap Livestock Auction. Schaben Real Estate LLC.

June 3 – 10:30 am, Coins, Antiques, Household & Shop Equipment Auction, John "Herb" Brich Estate. 503 Pearl St., Neola, IA. Osborn Auction LLC

June 3 – 10:30 am, Machinery Consignment Auction. Auction location Spencer Auction Facility, BeeBeeTown, IA. View Complete Salebill online at www.spencergroups.com. Spencer Auction Group & Gr8iron, 322 E 7th St. Logan, IA 51546, Ed Spencer 402.510.3276.

June 5 – 10 am, Alice Kwapiszeski Trust & Heirs of Alice Kwapiszeski Real Estate Auction. 219.24 Acres – Washington Township, Shelby Co., Iowa. Sale Location: St. Mary's Parish Center, 200 N. 2nd St., Panama. Schaben Real Estate LLC.

June 5 – 10 am, Roman Leuschen Farm, LLC Real Estate Auction. Westphalia Township, Shelby Co., Iowa. Sale Location: St. Boniface Parish Center, 305 Duren St., West. Schaben Real Estate LLC.

June 9 – 10 am, Lyle Nordby Estate Land Auction, sale location Irwin Community Bldg., 404 Front St., Irwin, IA, Closing Attorney: Kohorst & Fischer Law Firm. Osborn Auction LLC

DUNLAP LIVESTOCK AUCTION

701 Hwy 30 W, Dunlap, IA 51529, 712-643-5761

Sale Times for Tuesday, May. 30th @ 9:00 am Fed Cattle, followed by Weigh Cows & Bulls, Feeder Cattle @ 12:30pm then Bred Cows/Pairs/ Breeding Bulls

We recently lost a good friend & a lifelong cattle feeder, Paul Bettin from Wall Lake. Our sincere sympathy goes out to Max & the whole family.

Fed Cattle/Weigh Cows: Tuesday, May 16th:

Fats were steady with a range of \$175-\$180.10. We are seeing several cattle harvested maybe a little early, trying to catch this market. Quite a few Strs & Hfrs weighing 1100-1300 that would appear to grade select. It appears the new crop cattle are not quite ready yet & we are quickly running out of supply on the old crops. Weigh Cows trend is fully steady to higher w/ cows showing lots of flesh bringing up to \$115.

WEIGH COWS 347 hd		FAT CATTLE 65 hd	Strs	Hfrs
Fed Cows	\$100-\$115	Top	\$181	\$179.50
Bulk Cows	\$85-\$97	Choice	\$177-\$181	\$175-\$179.50
Low Yield	\$60-\$80	Str. Select/Choice	\$170-\$176	\$170-\$175
High Yield Bulls	\$120-\$135	2-Ways	\$155-\$170	\$No Test
Bulk of Bulls	\$105-\$125	Choice Holsteins	\$No Test	
Cutting Bulls	\$110-\$150	Select Holsteins	\$No Test	
Preg open hfrs	\$135-\$160	Fat Hfrs	\$120-\$155	
Hfrs	\$100-\$140			

Special Bred Female/Pairs & Kline Angus Bulls May 17th:

We had almost 1300 head go through our sale on Wednesday. Great crowd on hand & demand stayed very strong clear to the end. Kline's 2yr old bulls met w/ good demand w/ prices \$2800-\$4000. 1st Calf Hfr Pairs \$2300-\$3025 w/ the bulk trading \$2400-\$2800. Young Pairs \$1800-2800 w/ the bulk trading \$1900-\$2500. Solid Mouth Pairs \$1500-\$2200. Aged Pairs \$1200-\$1550. Spring clving cows were in good demand but lacked any large groups. The bulk of fall clving cows brought \$1300-\$1700. Should be noted much of the variance in the price of pairs has to do with the size of the calf.

Special Calf/Yrlg, May 19th:

We ended the week with a Special Calf/Yrlg feeder sale Friday showing 1200 head. No weakness there. Super demand on all classes!

22 Strs 492# @ \$297.50	14 Hfrs 459# @ \$260
10 Strs 585# @ \$276	10 Hfrs 573# @ \$219.50
20 Strs 675# @ \$239.25	15 Hfrs 618# @ \$217
15 Strs 721# @ \$212	143 Hfrs 772# @ \$203.50
39 Strs 836# @ \$207	

UPCOMING AUCTIONS

Fri. Jun. 2nd: Special Calf/Yrlg

Tues. Jun. 6th: Special Bred Female/Pairs/Bulls

Tues. Jun. 13th: Special Bred Female/Pairs/Bulls

Tues. Jun. 20th: Special Bred Female/Pairs/Bulls

Fri. Jun. 23rd: Special Calf/Yrlg

Special Calf/Yrlg

Friday, Jun. 2nd @ 10:30AM - Expecting 1000 Head

- 350 Blk Hfrs 725#, vac x3
- 130 Blk Strs 850#, vac x3, coming from Double L
- 89 Most. Blk Strs 800#, strictly green, vac x2 & LTW
- 83 Most. Blk Hfrs 775#, strictly green, vac x2 & LTW
- 50 BlkX S/H 675#
- 45 Most. Blk S/H 650-700#
- 35 CharX S/H 750-850#

Office: 712-643-5761

Jim Schaben Jr. 263-9449 • Jon Schaben 263-0755

Will Epperly 712-269-5677 • Don Stessman 712-263-7505

Bob Paulsrud 712-830-7438 • Greg Drake 712-304-4325

Web Site: www.dunlaplivestock.com

Let small space ads get **BIG RESULTS** for you!

Schaben Real Estate is proud to offer these farms at PUBLIC AUCTION

• **MURLYN & LILLIAN RONK ESTATE REAL ESTATE AUCTION**

TRACT 1 74.15 ACRES CSR 74; TRACT 2 119 ACRES CSR 69.3

TRACT 3 158 ACRES CSR 59.9

Section 34 Harrison Township and Section 11 and 12 Douglas Township, Harrison County, Iowa

FRIDAY, MAY 26, 2023 • 10 AM

Sale site: Dunlap Livestock Auction; 701 Highway 30, Dunlap, Iowa

• **ESSER REVOCABLE TRUST REAL ESTATE AUCTION**

TRACT 1 146.49 ACRES CSR 55.8; TRACT 2 ACRES 25.40 CSR 41.9

Section 6 Cass Township, Harrison County, Iowa

WEDNESDAY, MAY 31, 2023 • 10 AM

Sale site: CREW Center; 601 Snyder Rd. Woodbine, Iowa

• **CULVER EXEMPTION TRUST REAL ESTATE AUCTION**
79 ACRES

Section 25 Harrison Township, Harrison County, Iowa

THURSDAY, JUNE 1, 2023 • 10 AM

Sale site: Dunlap Livestock Auction, 701 Hwy 30, Dunlap, Iowa

• **ALICE KWAPISZESKI TRUST AND THE HEIRS OF ALICE KWAPISZESKI REAL ESTATE AUCTION**
TRACT 1 70.22 ACRES CSR 67.8; TRACT 2 35.21 ACRES CSR 77.4
TRACT 3 113.81 ACRES 58.2 ACRES

Parts of section 22, 23 and 27 Washington Township, Shelby County, Iowa

MONDAY, JUNE 5, 2023 • 10 AM

Sale site: St. Mary Parish Center; 200 N 2nd Street, Panama, Iowa

For complete sale bills visit www.jimschabenrealestate.com

Auctions managed by

Schaben Real Estate

701 Highway 30 West • Dunlap, Iowa
www.jimschabenrealestate.com



Office 712-643-5761

For information contact

Jim Schaben 712-263-9449

Jay Schaben-Broker/Owner

Jim Schaben-Owner

Country Care Center Corp.

725 Highway 59, Harlan, Iowa 51537

Our Overnight Attendant is retiring after 27 years of providing care for our residents!

We are looking to fill this full-time position with a fun, energetic, reliable individual capable of working independently!!

Minimum hours 60 hours per two week period to maximum 80 hours per two week period. Shifts are 9:30 p.m. to 5:30 a.m. or 8:30 p.m. to 5:30 a.m. (to make maximum hours). Hours includes every other weekend of Friday, Saturday and Sunday but followed by Friday, Saturday and Sunday off the next weekend.

Starting wage \$16.00/hour with \$4.00/hour additional from midnight Friday until midnight Sunday. Will train, not certificate or license required. Wage negotiable for persons with LPN License or former LPN.

Required holiday hours worked paid at 2.5 times regular rate. (excludes weekend rates)

In addition to holiday, CCC offers Health, Dental, Vision, Life and Short-Term Disability Insurance as well as PTO.

Job requires background check and valid driver's license as well as pre-employment physical, TB and Covid screening.

Stop by for an application at 725 Highway 59 in Harlan or email resume to cccc@fmctc.com

FOR SALE

2023 MANUFACTURED HOMES. (14x60) 2Br, \$39,999. (16x80) (3Br - 2Ba.) \$61,999. (24 x 44) (3Br - 2Ba) \$69,999. (28X64) (4Br-2Ba) \$79,999. Delivered Factory-Direct, E. Of I-35, North of I-80, to Minnesota Border. 319-239-1920. (mcn)

WANT TO BUY

WANT TO BUY your manufactured or mobile home 1990 and newer CENTURY HOMES of OSKALOOSA 641-672-2344 (mcn)

AUTOMOBILES

CASH FOR CARS! We buy all cars! Junk, high-end, totaled – it doesn't matter! Get free towing and same day cash! NEWER MODELS too! Call 1-877-978-2510. (mcn)

DONATE YOUR CAR TO CHARITY. Receive maximum value of write off for your taxes. Running or not! All conditions accepted. Free pickup. Call for details. 855-752-6680 (mcn)

EARLY DEADLINE NOTICE

In observance of Memorial Day, advertising information must reach the Harlan Newspapers by **10 AM Wed., May 24** for the May 30 Rocket.



BACKED BY A **YEAR-ROUND CLOG-FREE GUARANTEE**

20% OFF

+

10% OFF

FREE GUTTER ALIGNMENT + FREE GUTTER CLEANING*

CALL US TODAY FOR A FREE ESTIMATE

Promo Number: 285

1-855-577-1268

Mon-Thurs: 8am-11pm, Fri-Sat: 8am-5pm, Sun: 2pm-8pm EST

*For those who qualify. One coupon per household. No obligation estimate valid for 1 year. **Offer valid at time of estimate only 21The leading consumer reporting agency conducted a 16 month outdoor test of gutter guards in 2010 and recognized LeafFilter as the "#1 rated professionally installed gutter guard system in America." Manufactured in Plainwell, Michigan and processed at LMT Mercer Group in Ohio. See Representative for full warranty details. Registration# 036620922 CSLB# 1035795 Registration# HIC0649905 License# CBC056678 License# RCE-51604 Registration# C127230 License# 559544 Suffolk HIC License# 52229-H License# 2102212986 License# 262000022 License# 262000403 License# 2106212946 License# MHIC111225 Registration# 176447 License# 423330 Registration# IR731804 License# 50145 License# 408693 Registration# 13VH09953900 Registration# H-19114 License# 218294 Registration# PA069383 License# 41354 License# 7656 DOL #10783658-5501 License# 423330 License# 2705169445 License# LEAFF-NW82JZ License# WV05912

OLESEN

Auto Center, Inc.

SALES-SERVICE-TIRES



2023 Chevy Corvette Coupe 3LT Z51
 6.2L V-8, 8-speed auto, dual clutch transmission, full power, including Z51 Performance Pkg., battery protection pkg., yellow painted calipers, Competition Sport bucket seats, 20-spoke bright machined face forged aluminum wheels. Low miles.
\$95,000



2016 GMC Sierra 2500 HD Denali Crew Cab 4x4
 6.6L Duramax Diesel, Allison transmission, full power, including heated leather seats & steering wheel, 3.73 axle ratio, locking rear differential, sunroof, chrome wheels, newer Falken AT3W tires, Black, 225K miles, local 1 owner.
\$32,995



2022 Chevy Silverado Regular Cab LT Z71 4x4
 6.6L gas engine, auto, air, tilt, cruise, AM-FM stereo, power windows, locks, mirrors, and heated cloth seats, trailer brake controller, keyless entry, rear window defogger, locking rear differential, 3.73 axle ratio, 20K miles, White.
\$53,995



2016 Nissan Maxima SV
 3.5L V-6, auto, full power, including power seat, keyless entry, heated leather seats, aluminum wheels. New tires, Pearl White, 107K miles. Local one owner.
\$15,900



2022 Jeep Wrangler Unlimited Rubicon
 3.6L V-6, 8-speed auto, air, tilt, cruise, AM-FM stereo, power windows, locks, heated leather seats & mirrors, heated steering wheel, Navigation, LED light group, steel bumper group, 3-piece removable hard top, front & rear locking differentials, aluminum wheels, 1,300 miles, Black. Local one owner.
\$64,000



2022 Chevy Silverado 2500 HD Regular Cab 4x4
 6.6L gas engine, 6-speed auto, air, tilt, cruise, AM-FM stereo, power windows, locks, mirrors, locking rear differential, 3.73 axle ratio, snowplow prep package, nerf bars. Spray-in bedliner, trailer brake controller, 4K, White.
\$50,900

www.olesenautocenter.com
Celebrating 106 Years Serving the Area...Great Service After the Sale!
AVOCA, IA • 712-343-6321

Myrtue's Specialty Clinic Brings You Dr. Ivey Thornton

Ivey Thornton, MD, is a board certified Ophthalmologist with Nebraska Medicine and will join Myrtue's Surgery + Specialty Clinic on June 27, 2023. Dr. Thornton will host clinics on the 4th Tuesday of each month. Ophthalmology is a surgical subspecialty within medicine that deals with the diagnosis and treatment of eye disorders.

Dr. Thornton specializes in Neuro-Ophthalmology, Advanced Dry Eye, Comprehensive Ophthalmology & Cataract, Cornea and Refractive Surgery, and Glaucoma.

Medical School: University of Alabama School of Medicine

Internship: Akron City Hospital

Residency: Ophthalmology, University of Louisville

Fellowship: Neuro-Ophthalmology, Massachusetts Eye and Ear Infirmary – Harvard University and Anterior Segment, Cincinnati Eye Institute



To schedule an appointment, call 712.755.4516.

Myrtue's Surgery + Specialty Clinic provides specialized care, surgical consultations, and recommendations for treatment, while keeping patients close to home.



MYRTUE
Medical Center



Nebraska
Medicine

SERIOUS MEDICINE. EXTRAORDINARY CARE.™

VEHICLE, CAMPER, 4 WHEELER, MOWER & MISC SALE

Saturday, June 3rd • 9:15 a.m.

Sale located at Denison Livestock Auction 501 9th Street Denison, IA



2013 Ford 350 Super-Duty Cab Chassis Dually Pickup w/ Alum-Line flatbed 8 X 8 app. w/removable 5th wheel ball, Gray, 108K, VIN #1FD8W3HTXCEC53847 Sharp – Bought New



2013 Winslow Excel Camper w/4 pull-outs, 34', Hyd. slide out system, fully automatic leveling system VIN #1P9RF3425D1090075 Loaded – Must See – Like New



Dixie Chopper Zero-Turn Mower – Silver Eagle SN# 2750.800261 Low Hours



Aladin Power Washer – 1000 psi. Model 13-310-80 SN#115683 Like New



2022 Honda FourTrax Rancher 4-Wheeler- Two wheel drive, Model: TRX420TM1, Very low miles VIN #1HFT3903N4801711 like new

4-WHEELER ACCESSORIES:

Pull Sprayer (50 gal) • Pull Type Fertilizer Spreader Disk – 5' to pull behind 4-wheeler



EZ Wheels Handicap Scooter – 4 Wheel

LIVESTOCK & HAY EQUIPMENT

Feed Bunks (6-10)
Water Tanks – various sizes (one is 300 gal)
Pipe Gates – 10' & 16'
Hay Feeder on Wheels w/new floor
Hay Rack – 16'w/good gear
2 - Apache Creep Feeders - portable
TOOLS
Tool Box
Air Compressor • Air Compressor Hose w/reel – portable
Reddy Heater • Toro Push Lawn Mower
Weed Eater & Hedge Trimmer
Garden Hoes/Potato Forks • Misc. Yard Tools
HOUSEHOLD ITEMS & MISC
Refrigerator • Freezer (chest type)
Cart • Decorative Kitchen Stand

AUCTIONEER'S NOTE: Having moved will be selling the following items. To view items come to Denison Livestock Auction.

Fred Gruhn, Owner

For further information Call John 712-790-1826 or Fred 712-210-4731

Pauley Family Auction Services LLC, Auctioneers • 712-263-3149 • www.denisonlivestock.com

DONATING YOUR VEHICLE? Get more! Free Towing. Tax Deductible. Plus a \$200 restaurant voucher and a 2-night/3-day hotel stay at one of 50 locations. Call Heritage for the Blind to donate your vehicle today - 1-855-977-7030. (mcn)

CABLE/INTERNET
FREE HIGH-SPEED INTERNET for

those that qualify. Government program for recipients of select programs incl. Medicaid, SNAP, Housing Assistance, WIC, Veterans Pension, Survivor Benefits, Lifeline, Tribal. 15 GB internet service. Bonus offer: Android tablet FREE with one-time \$20 copay. Free shipping & handling. Call Maxsip Telecom today! 1-866-443-3789. (mcn)

BEST SATELLITE TV with 2 Year Price Guarantee! \$59.99/mo with 190 channels and 3 months free premium movie channels! Free next day installation! Call 855-824-1258. (mcn)
DIRECTV SATELLITE TV Service Starting at \$74.99/month! Free Installation! 160+ channels available. Call Now to Get the Most Sports & Entertainment on TV! 844-558-1767 (mcn)

OPPORTUNITIES AT



MYRTUE
Medical Center

New Starting Wages | IPERS Retirement Savings | Great Health, Financial and Paid Time-Off Benefits | Wellness Center Membership
Part-time and Full-time positions are benefit eligible

Educational endowment opportunities and scholarships are available to healthcare workers pursuing healthcare certifications or degrees

Clinical/Nursing Openings:

RN - Public Health - Full-time; Mon-Fri; 8:00 am - 4:30 pm; Some weekends and evenings

RN or Surgical Tech - Perioperative - On-call; Schedule varies based on department needs

RN - ER - PRN; Schedule varies; 7:00 pm - 7:00 am

ER Tech – Part-time (16-20 hours) Works every third weekend (Fri/Sat/Sun); **On-call**; Schedules varies

CNA – Med/Surg – Full-time/On-call; 12-hour shifts; all shifts available

RN – Med/Surg– Full-time/Part-time; 12-hr shifts; Rotating weekends; On-call; 12-hr shifts

Additional Openings:

Behavioral Health Associate - Full-time; Monday-Friday; 40 hours/week

Behavioral Health Professional - Full-time; Monday-Friday; 8:00 am - 5:00 pm with possibility of working some later evening hours with half- or whole-day off; Masters required; New graduates and candidates with Provisional license considered

Environmental Services Supervisor - Full-time; 7:00 am - 3:30 pm; Flexibility needed; Weekend Rotation

Environmental Services Staff – Full-time; 2:00 pm – 10:30 pm or 4:30 am – 1:00 pm; Weekend rotation; **On-call** position with additional hours available

Fitness Center Facility Assistant - Part-time; (28 hrs); Mon/Fri - 3:00 pm - 9:00 pm; Sat/Sun - 11:00 am - 7:00 pm; \$1.50 shift differential; Benefits eligible

Fitness Monitor - On-call; Nights and weekends; Variable schedule

Lifeguards – On-call; Shifts flexible with school hours; Shallow lifeguard certification needed – will certify; **\$10.45 starting wage; \$11.45 on weekends**

Join our Award-Winning Team!

Apply Today!

myrtuemedical.org/careers



Myrtue Medical Center, Dept. of Human Resources
1213 Garfield Avenue, Harlan, IA 51537
712.755.4271 | EEO Employer/Vet/Disabled



Portable Self-Storage

Call or Text 712-522-5268

rent@yardboxstorage.com



WHY MAKE TRIPS TO THE STORAGE FACILITY WHEN YOU CAN YARDBOX IT!

Family Owned and Operated

We serve a 60+ mile radius of Harlan, Iowa

Call for a quote today!

yardboxstorage.com

DISH NETWORK. \$64.99 for 190 Channels! Blazing Fast Internet, \$19.99/mo. (where available.) Switch & Get a FREE \$100 Visa Gift Card. FREE Voice Remote. FREE HD DVR. FREE Streaming on ALL Devices. Call today! 1-855-434-0020 (mcn)

DIRECTV. New 2-Year Price Guarantee. The most live MLB games this season, 200+ channels and over 45,000 on-demand titles. \$84.99/mo for 24 months with CHOICE Package. Some restrictions apply. Call DIRECTV 1-866-296-1409. (mcn)

CONNECT TO THE BEST WIRELESS home internet with EarthLink. Enjoy speeds from 5G and 4G LTE networks, no contracts, easy installation, and data plans up to 300 GB. Call 844-878-2209. (mcn)

Two Sunday Auctions' • Sunday June 4th & June 11th, 2023 • 11am
 Sidney, IA South to Jct. 275 & Hwy 2 West on Hwy 2 to Bluff Rd. L-44 South 3 Miles to Auction Site
Donald & Lois Crouse, Owner

JUNE 4TH, 2023 • 11AM
SELLING PARTIAL LISTING

Car & Pickup:

2016 Buick Lacrosse 44,410 Actual Miles • 2008 Chevy Silverado LT Club Cab V8 4x4

Antiques & Collectables:

Rare Vintage Standard Service Station Visible Gas Pump restored w/new glass, gallon labels, & Globe • JD #20 Peddle Tractor • Peter Wright Anvil • Well Top Pumps • Corn Sheller • Longaberger Baskets • Milk Cans • Sugar Bucket • 1 Man & 2 Man Saws • Hamburg crock jar w/lid • 5 gal crock • HM Quilts • Claw foot lamp stand • Pfaltzgraff blue leaf for 10 • Pink & Green Depression • Ruby Red • Stemware • Wood duck Decoy • Ornate frame pictures • Oak & Walnut Chairs • 4 Porch Posts • Zinc Tub

All nice & Clean Household Furniture & Miscellaneous • Patio Items • Approximately 50 toy Tractors, Machinery, & Semi Trailers in Boxes • Ertl. 1:12 scale • IH 560 • Farmall M • 1:16 • 1:32 • 1:64 Tractors • Toy John Deere Tractors in Boxes Etc.

JUNE 11TH, 2023 • 11AM

Tractors • 4-Wheeler • Golf Cart • Mowers • Boat:

1969 Oliver 1750 D. WF PS Good Rubber 3pt. Repainted nice must-see w/Westerndorf Loader • Farmall 350 G. NF, FH 3pt. PS, like new rubber, straight, good tin, & paint • Polaris Pediton 425 4x4 ATV w/52" snowblade • EZ-Go #30 Electric Golf Cart • JD X534 Riding Mower 4 wheel steer 60" cut • Cub Cadet Zero Turn w/steering wheel 60" cut • Cub Cadet 1872 not running • Honda Self Self-propelled 22" mower like new • Tilt bed lawn trailer • 16' V Boat w/40 hp Mercury outboard console steering

Acreage, Machinery & Trailers:

Rhino 7' 3pt Shredder • Woods 6' Finishing 4-wheel mower 3pt. • 3pt 8' Scraper • 3 section Cultipacker • IH 7' Bar Mower • FH 2 Bottom Lister • 16' Tandem Axle Flatbed • 5x10 2-wheel Trailer

Yard & Garden:

Viper rear-tine tiller • Honda & Stihl Gas power Cult-tillers' • planter w/plates • 25 Crib Tunnels • Elec. & Gas weed eaters' & blowers • fishing poles & Etc.

Woodshop & Woodworking Equipment:

Ingersoll upright Air Compressor • Dip-Pak 250 wire welder w/bottle • Miller AC-DC Welder • Clarke Delco Edge 54 Hot water, power washer • Honda 2800 PSI Power Washer • Oxy. Cet. Torch outfit on cart • 8-ton Engine hoist • Pedestal Grinder 4hp • Saw All Elec. & Cordless • Jet wood turning Lathe 12x20 • Ridgid Sander • Ridgid 12" planer w/vacuum • Ridgid Power planer 4" w/power vac outlet • Ryobi Band Saw w/vac attachment • Ryobi 4" x36 Belt Sander • Craftsman Drill Press • Keyhole saw • 12" Miter Saw • Craftsman 10" table saw • JD ¾" Socket set • Rem-Line 7 drawer Base tool Cabinet w/10 drawer top chest • 4 ton floor jack • Air tools • Battery chargers • 16 furniture Clamps • Standard end Wrenches of all kinds • NIB 2000lb. ATV Winch • 100' HD 220V Cord • Socket sets • Chain saws • Chain Binders • Transfer Pump w/3 1/2 hp & 50 gal Aluminum Tank

Terms: Cash or Bankable Check Day of sale

Please check web for 2-day Sale Bill

Like us on Facebook: Van Scyoc Auctions, see Sale Bill and Pictures at farmerpublishing.com.

Van Scyoc Auctions, Tom Van Scyoc & Associates 712-370-2295



Quality,
Affordable
Auto Insurance
Is The KEY!

GIVE US A CALL FOR A FREE QUOTE.

LSI Insurance Services, Inc.

4138 Main • Elk Horn, IA
 712-764-6000 • 1-888-764-6004



**Want good, fresh, locally
homemade potato salad?**
*Graduations, Weddings,
Reunions, or Other Special
Events*

(Must place order at least 2
weeks in advance of event)

(712) 249-5188
Harlan

VERY LARGE ESTATE AUCTION

Jeanene A. Davis
Sunday, May 28th • 11 AM
Fremont County Fair Grounds,
Sidney IA • McElroy Building

Excellent Quality, Nice & Clean
 Modern Furniture • Appliances • Antique
 Furniture • Collectibles • Primitives •
 Glassware • Yard • Garage • Shop
 items • Household misc. all very Clean •
 25 Dolls Old & New

Van Scyoc Auctions
Tom Van Scyoc Auctioneer
& Associates

712-370-2295 • Sidney, IA

Like us on Facebook (Van Scyoc Auctions)
See farmerpublishing.com for Pictures & Sale Bill

Pooper Scooper

Serving Harlan,
Avoca and various
towns surrounding.



Villa Apartments
 Managed by Zoul Properties
 Has 1 and 2 bedroom
 apartments available NOW!
 Located within walking distance
 to downtown Harlan. Close to
 churches and coffee shops.
 Call 712-469-4033 for details.



DISH NETWORK: ONLY FROM DISH-
 3-year TV Price Guarantee! 99% Signal
 Reliability, backed by guarantee. Includes
 Multi-Sport with NFL Redzone. Switch
 and Get a FREE \$100 Gift Card. Call
 today! 1-855-434-0020. (mcn)

FINANCIAL
 THE COVID CRISIS has cost us all
 something. Many have lost jobs and
 financial security. Have \$10K In Debt?
 Credit Cards. Medical Bills. Car Loans.
 Call NATIONAL DEBT RELIEF! We can
 help! Get a FREE debt relief quote: Call
 1-866-552-0649. (mcn)

HEALTH & MEDICAL
 PORTABLE OXYGEN CONCENTRA-
 TOR May Be Covered by Medicare!
 Reclaim independence and mobility with
 the compact design and long-lasting bat-
 tery of Inogen One. Free information kit!
 Call 844-716-2411. (mcn)

**DENTAL INSURANCE FROM PHYSI-
 CIANS** Mutual Insurance Company.
 Coverage for 350 plus procedures. Real
 dental insurance- NOT just a discount
 plan. Do not wait! Call now! Get your
 FREE Dental Information Kit with all the
 details! 1-855-973-9175 www.dental50p-
 lus.com/https://www.dental50plus.com/
 midwest #6258 (mcn)

**DON'T LET THE STAIRS LIMIT YOUR
 MOBILITY!** Discover the ideal solution
 for anyone who struggles on the stairs, is
 concerned about a fall or wants to regain
 access to their entire home. Call Ameri-
 Glide today! 1-877-916-2093. (mcn)

FREEDOM TO CHOOSE.



We believe every operator should decide what they want to
 drive. That's why we give you the choice between joystick
 control and a traditional twin-lever steering system.

**These and many other
 new mowers are in stock!**

Country Clipper XLT - 24 HP, 52" deck	\$7,929
Country Clipper CHARGER - 25 HP, 56" deck	\$13,759
Country Clipper AVENUE - 18 HP, 42" deck	\$4,739
Country Clipper Boulevard - 23 HP, 48" deck	\$5,999
Country Clipper BOSS XL - 35 HP, 60" deck	
2022 Model	\$16,279
2023 Model	\$17,049



SCHEDULE A TEST DRIVE TODAY.

STEVE'S REPAIR
305 2nd St., Defiance, IA
712-748-4466

SOCIAL SECURITY DISABILITY

McGinn Law Firm
MCGINN, MCGINN, SPRINGER & NOETHE SINCE 1914

Free Initial Consultation • No Fee Unless Recovery

712-328-1566 Timothy J. Lenaghan, Jr.

www.mcginnlawfirm.com
20 N. 16th St. • Council Bluffs

Harlan's City-Wide Garage Sale Day is SATURDAY, JUNE 10, 2023



**Increase foot traffic to your
 garage sale by advertising
 your sale on our full-page
 advertisement!**

It's easy! Use the handy form
 below to give us your information.
 Your sale info will appear on our
 page in the June 6 editions of the
 Harlan Tribune and The Rocket
 and the June 9 News-Advertiser.

That's 3 publications!

But hurry!

**Deadline for placing your ad and reserving
 your spot on the map is Thursday, June 1.**

CITY WIDE GARAGE SALE!

☐ Yes! I want to participate in Harlan's City Wide Garage Sale day. 25 words for
 only \$19 includes three issues. Enclosed is my payment for my garage sale ad to
 be published as follows: (HINT: List your address first, then hours of the sale.)

EXTRA WORDS ARE 20¢ EACH

Payment of \$ _____ enclosed. ADS MUST BE PRE-PAID!

Name _____

Address _____

Phone Number _____

**MAIL OR BRING TO: HARLAN NEWSPAPERS,
 PO BOX 721, 1114 7TH ST., HARLAN, IA 51537 • 712-755-3111**

The Shelby County Secondary Road Department is looking for seasonal help for the **Road Crew departments.**

Must be 18 years of age. CDL preferred but not required to apply.

Applications may be picked up at the Shelby County Engineers Office
1411 Industrial Pkwy. Harlan, IA.

AGP NOW HIRING
Ag Processing Inc **MANNING, IA**

Material Handler
\$24.97/hr

- Immediate medical benefits
- Advancement Opportunities
- Pension plan plus matching 401k

HS diploma required
Apply by following this link:
<https://www.agp.com/careers>

Or at our office located at
1000 300th Street Manning, IA 51455

Email questions to
careers@agp.com

Ag Processing Inc is an Equal Opportunity Employer and participates in E-Verify.

Join us for a Summer Picnic!

All FMCTC members, perspective members and their families are invited to join us for a picnic this summer to show our appreciation to you! We are planning these 4 locations. Feel free to attend any date/time/location that works for you!

Feel free to attend any of the following locations:

Harlan - Mon, June 5, 5-7pm

Veteran's Memorial Auditorium, 910 Chatburn Avenue, Harlan

Irwin - Tues, June 6, 5-7pm

Irwin Community Center, 504 Ann Street, Irwin

Dunlap - Wed, June 7, 5-7pm

St. Patrick's Parish Center, 509 South 3rd Street, Dunlap

Aspinwall - Thurs, June 8, 5-7pm

Aspinwall Community Center, 516 West Street, Aspinwall

Please come and enjoy Pizza Ranch Chicken! We look forward to seeing you!



FMCTC

Your Total Communications Provider
712-744-3131 www.fmctc.com

Spencer AUCTION GROUP

LAND AUCTION

Friday, June 9th • 10AM

275.32 Taxable Acres m/l

Auction Location: Twisted Tail Steakhouse & Saloon - BeeBeeTown, IA
Live Auction with Online Bidding Available
Cass Township Section 28 - Harrison County, IA
LIVE & SIMULCAST AUCTION

Cropland: 268.43 • **CSR2:** 65.6 • **Taxes** \$7,486.00

Farm is rented for the 2023 crop year. Buyer will receive 100% of the 2023 cash rent payment. Buyer will receive landlords possession at close and full possession March 1st, 2024.

Highly productive Western Iowa farmland just 2 miles South of Highway 44 on 270th St. Farm is fully terraced and has 1 mile of tile.

The Revocable Living Trust of H. Calvin Bertelsen, Owners
Leo Marlin, Attorney for the Estate

Spencer Auction Group
322 E 7th St | Logan, IA 51546
712.644.2151
www.spencergroups.com
Ed Spencer, Broker/Auctioneer
402.510.3276 or 712.644.2151

T BAR/T WELDING

402-871-4202
• Fabrication
• Repair
• Mobile Welding
• Plasmacam
bartelson77@gmail.com
Matt Bartelson,
Owner • Irwin

RESTAURANT GUIDE

Advertise your business in the Rocket for just \$16 per week.
Call 755-3111 or 1-800-909-6397

Dine-in, carry-out and warmer stocked for quick grab and go!

Smitty's FUEL & FOOD

Kitchen Hours: 7 am-7:30 pm
C Store: Open until 8 pm nightly
24 Hr. fuel pumps
Open 7 Days A Week!
Hwy 59 Defiance • 712-748-3663

Dine-In, curb side or carry-out
Wed. thru Sat., 4:00 pm to 8:30 pm
Serving ice cold drinks, steak, shrimp, chicken, sandwiches & more!

NORMA JEAN'S
120 Main, Panama • 489-2108

We are OPEN!
In-house seating and to-go orders
712-343-2419

To-Go Special
8 pc. Chicken \$9.95
We are following the current state guidelines for covid.

The EMBERS
I-80 & Hwy 59 • AVOCA

Troy's Bar & Grill
"Good Food, Good Drinks, Good People"
111 Main St., Earling, IA
747-3242
Thurs.-Sat. at 4 p.m.

Top 10 IOWA'S BEST Burger

DINING ROOM OPEN
with limited seating call ahead for a spot!
full menu available you can Order Online + Curbside Delivery
milkandhoneyiowa.com

Milk & Honey
1101 7th St., Harlan, IA
(712) 235-MILK (6455)

Luminarias represent Love, Support... & Honor of those affected by cancer.



Shelby County Relay For Life Luminarias

Relay For Life event held on Friday, June 9, 2023.

Luminarias are \$10 available from any member or online: www.relayforlife.org/shelbycountyia

Contact Cindy Schechinger, 712-579-1212
Julie Ziola, 813-245-4851
or Suzie Mages 712-579-1878.



18th Annual Art in the Park
Pioneer Park, 12th & Pine, Harlan, IA

Over 20 artists will be present with many attending for the first time!

Sunday, June 4
10 am - 3 pm

For more information:
Kristine Olson Harmon, Art Coordinator.

Featured Artists:
Erv Heindricks and Richard Longbow

Musicians: Ted Johnson, and other musicians.

Also enjoy Log Cabin Day at Potters Park

Art For Sale - Music - Food Entertainment

Interactive Art Activities
Sunday, June 4 • 12-3 PM



Message sponsored by:
Shelby County
HOTEL MOTEL TAX FUNDS
PROMOTING SHELBY CO. IOWA TOURISM

Ainsley Christensen
Alexa Hoffmann
Alexandrea North
Chuck & Leasa

Thompson Clay & Maggie Cunningham
Deb Hastert
Deborah King

Gaige Lytle
Haley McAndrews
Hope Chipman
Ina Burmeister
Jessica Montana

Joel North
Joe Mahlberg
Julia Renkly
Kimberly Piro
Luann Barrett

Luba Carlson
Mallorie Poehling-Wright
Paul Koch
Robert Dewaele

Sandra Clemons
Sonika Sorensen
Svitlana Kay
Will Chipman

COMMUNITY Appreciation Party

SATURDAY, JUNE 3RD

11:00am - 2:00pm | Hansen House



Meet & Greet with Local Race Car Drivers
Including Pizza Ranch Sponsored Cars & Drivers, Hansen House's Sponsored Car and Driver Jordan!

FREE train rides and jump house!



FOOD TRUCK:
Hotdog or Pull Pork
Sandwich, Chips,
Cookie & Water.

Hansen House Senior Living

703 Dye St, Harlan, IA
Call 833.870.5182

Roar into Harlan Fun Run

leaving by noon from Goozman's Westside • Downtown Harlan

Saturday, June 10, 2023 Harlan **Best Hardware**

\$15.00 each, all Drivers & Passengers

• Meal plan plus live music by "Two Man Party Band"

ALL VEHICLES & PUBLIC WELCOME!

Shelby County
HOTEL MOTEL TAX FUNDS
PROMOTING SHELBY CO. IOWA TOURISM

Summer Savings Event Pre-Sale

*We also offer
no Credit Needed
**Flexible Payment
Options through
KOALAFI

Up to
24
Months FREE
Financing*
W.A.C.



Tailored box back cushioning, a crisply detailed pad-over-chaise, and a strikingly sophisticated arm treatment bring city chic and metropolitan sophistication to the suave nuance of the Metro collection. Covered in a beige cloth with subtle grey undertones. With accent pillows SPECIAL PURCHASE WHILE THEY LAST.

Reclining Sofa \$949 • Loveseat \$929



Pure comfort wrapped in a classic design, the Key Note motion collection makes a bold yet familiar statement. Generous doll head roll arms are trimmed with round welt which continues up and around the stylish wings, sophisticated and transitional, classic cozy styling with accent pillows.

**Power Recliner & Power Headrest
Sofa \$1,449 • Loveseat \$1,399
Accent Recliner \$989**



Sahara 93 inch TV Stand/Console built with 100% solid mango wood, multi-step lacquer finish in a cream and caramel two-tone finish. Custom door knobs in an antique bronze finish, wire management holes on the back panel, one fixed shelf behind the doors. 27 inches tall.

TV Stand/Console \$879



Sahara Series occasional tables in a cream and caramel finish, solid mango, simple yet elegant styling.

Cktl table \$495 • End Table \$365

A sophisticated sofa with fine lines, smooth curves and ample comfort. Cleo's distinctive profiled can be dressed up for more formal settings or down for a more casual look.

**Sofa \$1,399
Chaise \$1,229**



Old World charm with an eclectic feel. 100% solid wood, Subtle Drift Sand finish enriches the natural mineral deposits on the wood grain, providing unique texture and depth. Solid wood drawers feature English dovetail joinery on drawer fronts, ball-bearing Hafele metal glides provide a durable and effortless glide. Microfiber-lined top drawers on dresser and nightstand.

Queen frame \$1,249



Sahara 70 inch TV Stand/Console, solid mango with a cream and caramel two tone finish. 70" wide, 17 3/4 deep, 32" tall with 2 Drawers & 2 Doors

TV Stand/Console \$899



A richly rustic finish the Havalance flip-top sofa table features a distressed two-tone treatment blending a weathered gray with vintage white for an utterly charming effect. Expecting company? Simply open the flip-top panels to instantly create additional dining space.

Flip-Top Table \$485



This hi-leg Recliner ROCKS! Being able to smoothly rock on a hi-leg recliner was never before possible. Now you can even rock in the fully reclined position, not to mention all the positions in between. STYLISH AND COMFORTABLE! Multiple styles and fabrics available. POWER RECLINING WITH ADJUSTABLE HEAD REST. Extended foot rest for long legged individuals. **SEVERAL IN STOCK**

Serving our Valued Clients for 61 years! Family owned and operated since 1961.



HINELINE
HOME FURNISHINGS, INC.



1411 S. Main Street • Maryville, MO • 660-562-0003
1215 W. Nishna Road • Shenandoah, IA • 712-581-9016
2205 23rd Street • Harlan, IA • 712-755-5118
Mon.-Wed & Fri. 9-5:30 • Thurs. 9-7 • Sat. 9-5 • Sun. 1-5
www.hinelinehomefurnishings.com

*O.A.C. Minimum purchase required. **We do perform a credit check on the customers as part of our application process. No Credit Needed does not imply No Credit Check.

Batteries Cause Fires!

- Lithium
- Lithium-ion
- Nickel/Metal Hydride Ni-MH
- Mercury/Silver Oxide
- Nickel-Cadmium Ni-Cad



**NEVER TRASH
DISPOSE @ TRANSFER STATION
HAZARDOUS WASTE PROGRAM**

Shelby County Solid Waste
1129 1200th St. Harlan (712) 755-5010



Trimmers

\$149

Starting at
Performance, portability
and convenience.



NELSON FARM SUPPLY

Hwy 44. HARLAN • 712-755-3115 • 800-772-6184

167.31 FSA CROPLAND ACRES M/L SHELBY COUNTY LAND AUCTION

HEESE FAMILY TRUST, Owners
WEDNESDAY, JULY 12th, 2023 • 10:00 A.M.
SALE LOCATION: St. Joseph Parish Hall
118 Main St., Earling, IA

PARCEL 1

155.71 FSA CROPLAND ACRES M/L
Washington Twp. – Section 1

PARCEL 2

11.6 FSA CROPLAND ACRES M/L
Washington Twp. – Section 1

Closing Attorney: Kohorst & Fischer Law Firm
602 Market St., Harlan, IA

Auctioneers: Osborn Auction LLC • 712-579-4824

AUCTION CONDUCTED BY: OSBORN AUCTION, LLC
Mitch Osborn, 712-579-4824 • Walnut/Harlan, IA
www.osbornauction.com

LYLE NORDBY ESTATE, OWNERS 136 TAXABLE ACRES M/L – SHELBY COUNTY FARMLAND AUCTION

(Greeley Township – Section 24)
FRIDAY, JUNE 9TH, 2023 • 10:00 A.M.

SALE LOCATION: Irwin Community Building – 404 Front St., Irwin, IA

Farm Location: From Irwin, IA go
north 2 miles on M47 to 2200th
St. Drive west .9 mile and farm is
on south side of the road.

*The acreage and land on
north side of creek have been
surveyed off and will not be
sold.*

LEGAL DESCRIPTION: Subject
to survey.

FSA INFORMATION: These
figures are based on current
FSA figures without the acreage
and land on the north side of the creek
being surveyed off.

CSR2: 59
Acre Corn Base: 111.6
PLC Yield: 179
Acre Soybean Base: 29.4
PLC Yield: 47
Terraces: Yes
Soil Types: Exira, Marshall, Shelby-
Adair, Judson-Ackmore-Colo



TAXES: Subject to survey. Sellers agree to
pay all taxes prorated to July 28th, 2023.

TERMS: The successful bidder or bidders will sign a purchase
agreement on the day of the sale at which time put 10% down
payment with the balance due on July 28th, 2023. The new owner
will be credited the 2nd half cash rent payment of \$19,000 by the
tenant on December 1st, 2023.

Possession: New owner will take full possession on March 1st,
2024.

Closing Attorney: Kohorst & Fischer Law Firm
602 Market St., Harlan, IA • 712-755-3156

AUCTION CONDUCTED BY: OSBORN AUCTION LLC, Walnut/Harlan, IA
Mitch Osborn, 712-579-4824 • John Clayton, 712-249-1024
Curtis Osborn, 712-246-8722 • www.osbornauction.com

PRE-OWNED MOWERS

2022 Country Clipper XLT TS - 76 Hrs, 24 HP, 52" deck.. \$6,500
2021 Country Clipper Boss XL TS - 35 HP, 60" deck.. \$12,200
2016 Country Clipper BOSS XL JS - 35 HP, 72" deck. \$10,500
Country Clipper JAZEE II JS \$2,000
2015 Husqvarna ZTR - PZ60 \$5,400
2008 Cub Cadet - 53" deck \$5,600
John Deere LT 155 \$1,000
Case IH 2294 Tractor - 8760 Hours..... \$20,000
2008 Cub Cadet Tank \$5,000
2015 Cub Cadet SZ 60 \$5,000

STEVE'S REPAIR

305 2nd St., Defiance, IA
712-748-4466

BULLS FOR SALE: Angus and
Limousin bulls with weaning
weights up to 808 lbs, Y wts to
1660 lbs. Complete
performance, feed efficiency
and EPD data. Excellent
disposition. Great set of easy
calving, carcass improving 2 yr
olds and yrlns available. Fully
guaranteed. We sell a lot of
bulls & over 80% sell to repeat
buyers every year.
Leonard Limousin and Angus.
Mark Leonard, Holstein, Iowa
712-368-2611 or 712-830-9032.

**WESTRIDGE
SENIOR APARTMENTS**
2004 Garfield Ave. Harlan, IA 51537
Quality Senior Living
for those 62+ or Disabled
24/7 Maintenance
Rent Includes Utilities
Contact Us:
Residential@pacificmgt.net
www.pacificmgt.net
712-755-3350 Office
Call To Book a Tour Today!
"Let us take care of the lawn!"
Managed by
Pacific Management, Inc.



PART-TIME JAILER



The Crawford County Jail has an opening for a part-time jailer.
Once certified the wage is \$20.17 with some benefits.

Applicants must be 21 years of age and pass a background
check. Must have the ability to work all shifts in a 24/7 environment.

Applications can be picked up at the jail, 1202 Broadway in
Denison, IA and will be accepted until the position is filled.

**James Steinkuehler, Sheriff
Crawford County**

Crawford County Information Technology

Crawford County is seeking proposals
to construct a Server Room at
114 N 14th St, Denison, IA

The Server room must be completely enclosed with cinder block.
It requires: an independent air conditioner, its own breaker
panel, and conduits run through the cinder block for network
and power access. The proposal should include widening
and replacement of the basement entryway door.

Furthermore, a widening of the server room door will be
required along with the installation of a steel door.

The purchase and installation of a generator is also requested in the RFP.

Interested bidders need to contact Crawford County Information
Technology Director Jacob Langholz for additional details.

A walk-through will be accomplished Tuesday, May 30,
2023, at 10 a.m. at 114 N. 14th St. Denison, IA.

Last day to submit proposals is Monday, June 5, 2023, at 4 p.m.
Proposals will be opened and awarded Tuesday, June 6, 2023,
at the Board of Supervisors meeting.

Youth Services Clerk

OPEN POSITION AT THE LIBRARY
Part-time

25hrs per week Monday – Friday • No Holidays
Paid Leave, IPERS & Wellness Benefits

The Harlan Community Library is looking for an energetic and creative
individual to join our library team. Job responsibilities include assisting the Youth
Services Librarian with planning and implementing programs for youth, working
at the circulation desk, assisting with collection maintenance, and shelving. The
applicant should have: experience working with the public, especially youth;
extensive computer experience with Microsoft Office; enjoy being creative
and crafty. Excellent customer service skills, organization and an interest in
reading are required. Graduation from standard High School or GED equivalent.
Combination of experience, education and training that provides the required
knowledge, skills and abilities to successfully do the job. Qualified applicants
need to fill out an employment application which are available at the library or on
our website at www.harlanlibrary.org.
EOE. Position will remain open until filled.

NOTICE

Kloewer Pumping Service
Still Serving You!

Owner Roger Blum

CESSPOOL PUMPING



Call Collect 712-748-3961
Cell 712-579-1009
Defiance, IA

45 yrs. service to this area

Retro PARTY BUS



**EXPRESS
CHARTER**

712-235-6128 • HARLAN

- Up to 40 people
- Full conveniences
- Wedding Package Now Available!



Harlan's
City-Wide
**GARAGE
SALE
DAY**
Saturday,
June 10

Lyle Nordby Estate, Owner

HOUSEHOLD, SHOP EQUIPMENT, FARM MACHINERY, VEHICLES & CAMPER AUCTION

SUNDAY, JUNE 11TH, 2023 • 11:00 AM

Sale Location: 1819 2200th St., Irwin, IA

CAMPER & BOAT: 2022 CHEROKEE PATRIOT EDITION TRAVEL
CAMPER (BRAND NEW); 1974 Larson 18' Evinrude 135 Outboard Motor.
HOUSEHOLD & MISC: Whirlpool Refrigerator w/Freezer on top;
Kenmore 13 Cu. Ft. Chest Type Deep Freezer; Tupperware; Pots & Pans;
Kitchen Utensils; Meat Slicer; Waffle maker; Blender; Crockpot; Elect.
Heater; Floor Fans; Dorm Fridge; Microwave; Bissell 12 amp. Wind Tun-
nel Vac.; Dog House; Storm Door; 2 – Sliding Glass Summit Doors; White
Steel Door; Several misc. items too numerous to mention. **ANTIQUES
& PRIMITIVES:** Primitive Wood Coffee Table; Oak School Desk; Oak
Rocker; Oak Hall Tree; 2 - Oak Church Pews; Sewing Rocker; Blue
Banded Beater Jar; 5 Gal. Crown Crock; Small Crock; Griswold Cast Iron
#5 Skillet; Cabellas Cast Iron #10 Skillet; Coca Cola Glasses; Other sur-
prises day of auction. **TOOLS & MISC:** 2 – Bosch 36v. Drills; DeWalt 18v.
Drill, Light, Skisaw; DeWalt Elect. Sawzall & Sander; Stanley Tree Pruner;
Log Chain; Crescent Wrenches; Senco Air Finishing Nail Gun; Porter
Cable Air Finishing Nail Gun; Wagner Air Paint Sprayer; Bolt Cutter;
Shop Lights; Disc Sander; Schumacher Battery Charger; Stanley Level;
Screwdriver set; Socket Sets; Keller Little Giant Type Ladder; 32' Alum-
inum Ext. Ladder; 16' Alum. Ladder; Husky 6' Step Ladder; 2 – New Rolls
of Barb Wire; Several Flats of misc. hand tools. **SHOP EQUIPMENT:**
DeWalt 120v Max. Compound Mitre Saw on Stand; DeWalt 10" Table
Saw; Rigid 14 Gal. Shop Vac.; HGC Homier Meat Band Saw; Honeywell
Generator; Drywall Lift; Tex Finish Magnum Drywall Texturer; Drill Press;
2 – Metal Storage Cabinets; Appliance Cart; 7 cu. Ft. Stihl Gorilla Utility
Cart; 2 Ton Cherry Picker; Propane Torch. **LAWN & GARDEN EQUIP-
MENT:** Ariens 7524 Snowblower; DeWalt Batt. Weedeater; Stihl HSE 70
Elect. Hedge Trimmer; Cub Cadet RT 65 Rear Tine Garden Tiller; Troy
Built Push Lawnmower w/bagger; Toro Push Mower; Stihl Mantis Style
Front Tine Tiller; 2 Wheel Tilt Bed Garden Cart w/oversized Tires; Life-
time Round Picnic Table; MoJack Lawnmower Jack; Fimco Pro Series
Pull Type Sprayer; Rubber Maid Water Tank; 2 – Rope Handled Tubs;
4 Wheel Mover; 1000 Gal. LP Tank; 500 Gal. LP Tank. **NEW UTILITY
BUILDING & GRAIN BIN:** Lofted 12'x 20' Barn Style Portable Bldg.;
7000 Bu. EATON Grain Bin. **TRACTORS & ATTACHMENTS:** 2020
MASSEY FERGUSON 1735M Utility Tractor w/MFW DL125 loader &
Quik Tach Bucket (68 hours); Ledge 6' Grapple LE 23001 Bucket; Work
Saver Pallet Forks; Tar River 3 pt. Tiller; Vernig 7' Quik Tach Bucket; 1969
OLIVER 1850 Tractor (3585 Hours on tach); CASE 1070 w/Westendorf
WL-42 Loader (8500 hours); Bush Hog 216 3 pt. Cutter. **FARM MACHIN-
ERY:** Westfield WR 80-31 Truck Auger; 3 Pt. Gear Drive YCT-074 Tiller;
Snow Bear 7' Front Mount Snow Blade; Bomgaars 3 pt. 6' Box Scraper;
Westendorf WL-42 Loader. **VEHICLES, COLLECTIBLE CARS & MO-
TORCYCLE:** 2011 Honda Pilot LX (210,000 miles); 1992 Chevy Blazer;
1986 S10 Chevy Blazer; 1983 GMC 1KM School Bus; 1937 Model P3
Coupe; 1936 Chevy Custom Touring Sedan Coupe; SUZUKI Motorcycle.

AUCTION CONDUCTED BY: OSBORN AUCTION LLC, Walnut/Harlan, IA
Mitch Osborn, 712-579-4824 • John Clayton, 712-249-1024
Curtis Osborn, 712-246-8722 • www.osbornauction.com

Ride with the #1 car insurer in IOWA.

With competitive rates and personal service, it's no wonder more drivers trust State Farm®. Like a good neighbor, State Farm is there.®
CALL FOR A QUOTE 24/7.



Tracy Hough, Agent
928 Valley View Dr.
Council Bluffs, IA 51503
Bus: 712-325-1916
www.tracyhough.com



Steve Keller, Agent
409 E Erie
Missouri Valley, IA 51555
Bus: 712-642-3568
www.stevекeller.org



Rhonda Hope, Agent
111 No Elm Street
Avoca, IA 51521
Bus: 712-343-2577
rhonda.hope.gsdd@statefarm.com



Clark Ahrenholtz, Agent
2114 12th Street
Harlan, IA 51537
Bus: 712-755-5724
Email:
clark.ahrenholtz.jb69
@statefarm.com



EJ Leinen, Agent
513 Court Street
Harlan, IA 51537
Bus: 712-755-5825
www.ejleinen.com



statefarm.com®

State Farm Mutual Automobile Insurance Company
State Farm Indemnity Company
Bloomington, IL

1001143.1

Harlan • Avoca • 05/23/23

DENISON LIVESTOCK AUCTION

Established Since 1943



• Feeder Pigs 8:30 a.m. • Misc. 9:00 a.m.
Sheep 9:00 a.m. • Cow 11:00 a.m.
Followed by Feeder Cattle



Sale for Saturday, May 27, 2023
Big BRED COW – PAIR SALE

Due to the Early Ad Deadline because of the holiday, we will not have an ad for the Saturday, June 3rd Sale. We will have our Regular Sale on Saturday, June 3rd with the regular run of livestock, hay and outside items. Check our website for updated consignments or call for more information.

– PIGS –

SOLD 15 WEIGH SOWS –
NO TEST. Market is like \$10 –
Yes, you can cry.

350 – 450# \$
450 – 550# \$
550 – 650# \$

BOARS –

Big Boars - \$ Light Boars \$ -
NO TEST

SOLD 117 BUTCHERS
TOP \$60 MANY - \$58 plus
JUNK HOGS
80# - 240# - \$30 - \$52 a
pound

– SHEEP –

Sheep market steady to lower

– COWS –

BIG SPECIAL BRED
COW – PAIR SALE –
11:00 a.m.

5 Shorthorn Cows – running
age w/shorthorn calves
10 BI/BWF/RWF Cows – 4th to
6th calf w/BI calves @ side,
calves – all shots Scranton
10 BI Cows – 5th to 8th calf
w/BI-Simm X calves @ side
Denison
10 BI Cows – running age w/
Big BI-Simm calves @ side
Portsmouth
15 BI Cows – 2nd to 7th calf w/
Big BI Calves @ side Anthon
10 BI Cows – 1st to 6th calf,
mated BI, calving June/July
Webster City
20 BI/Char/Herf Cows – 4th to
solid mouth, mated BI-Simm
or Red, calving June/July
Emerson
15 BI Younger Cows w/Big
calves @ side, bred back to
have fall calves and
10 BI/Red Younger Cows w/nice
calves @ side Coon Rapids
15 BI Cows – 1st to 6th calf w/
Big BI-Simm calves @ side
Audubon
8 BI Cows – running age w/
calves @ side Harlan
33 BI Mx X Cows – young to
old, some pairs, some spring-
ers, some will be split
15 BI Cows – 6 yrs to solid
mouth w/big calves @ side
Storm Lake
1 BWF Simm Bull – 33 mo old
Call Friday for latest consign-
ments.

– CALVES –

If you need Bucket Calves
should have 10 - 20 nice ones

See last week's ad for
Special Calf & Yearling Sale
This Thursday, May 25, 11:30 am
Expecting a short 1500 cattle
weighing 350# - 950#

150 – 300 WEIGH COWS,
HEIFEREETS, BULLS
Sold 313 Weigh Cows & Bulls
Market Higher

TOP COWS - \$105 - \$120 on
high yielding – hard fed
FEEDING COWS – HEIF-
ERETS \$95 - \$165
MOST COWS – \$93 - \$103
OLD THIN LOW – \$65 - \$80

– BULLS –

HIGH YIELDING - \$115 - \$140
OTHER BULLS - \$95 - \$120

SOLD 23 FAT CATTLE
TOP CHOICE - \$175
Got a few fats to sell? Give
Saturday a try.

– MISCELLANEOUS –
Hay and Straw will sell at 10:00

NO SALE on Saturday, July
1st due to
4th of July Weekend

ATTENTION FARMERS:
Pauley Bros 1st June
Summer Machinery
Consignment Auction
Tuesday, June 13th
9:00 a.m.

Denison Livestock
Auction

Attention: We are here
to sell your used ma-
chinery consignments.

Call to get your ma-
chinery listed and let
us go to work for you!

For more information
or listings call Denison
Livestock Auction

712-263-3149

or Tom Pauley

712-263-0224.

THIS IS THE LAST
WEEK TO ADVERTISE
Dead line for Advertis-
ing – May 24th. CALL –
It Pays to advertise.

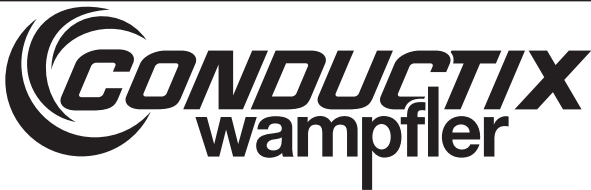
Well, it's been awhile since I wrote something smart or dumb. Looking at our National Debt, I wonder how our fearless leaders think. They all know the money is gone but in the next breath they want to give the Ukrainian's another 2 Billion of U.S. Tax Payers money. Stand up, get a backbone and stop spending our tax payers money on stupid ____ or stuff. If we had term limits, maybe they would vote for what is right and not what fills their own billfolds. Just remember most idiots in Washington D.C. when they got elected they were broke – 10 years later multi-millionaires. We need major changes fast before it is too late. Our poor grandkids won't have a chance. Our sympathy goes out to our good friend Dustin (Panda) Pope. At the age of 32 God came to earth way too early to get a great truck driving son of a gun. Rest In Peace.

Check out our web page at: www.denisonlivestock.com

For latest consignments, call Denison Livestock Auction, Denison, Iowa
Barn 712 - 263-3149 • JR Mobile 712 -269-7777 • Tom 712 -263-0224

Dave Vanness 265-1189 • Randy Pryor 644-7610

ERV PAULEY & SONS, OWNERS-OPERATORS



NOW HIRING MULTIPLE POSITIONS!

• **Welder**

Starting Wage up to \$24!

• **Material Inventory Coordinator**
• **Production Team Member**

Starting Wage up to \$22!

Conductix-Wampfler a growing manufacturer and leader in the mobile electrification industry, is looking to add top talent to their manufacturing team. We are looking for team members who are self-directed, dependable and want to be an active part of continuous improvement.

Qualified candidates will possess the following:

- Hand and power tool experience a plus
- Have experience working in a team environment
- Experience in machine operation a plus
- Blueprint reading a plus

Conductix-Wampfler offers a great starting wage, with health, dental, and life insurance, 401K plan, paid vacation/personal time and holidays, profit sharing and tuition reimbursement program.

Please send resume to

rogene.smith@conductix.com,

apply online at www.conductix.us under careers,

or apply in person at 1605 Industrial Parkway, Harlan, IA.

Drug-Free Workplace/EOE

STROKE AND CARDIOVASCULAR DISEASE are leading causes of death, according to the American Heart Association. Screenings can provide peace of mind or early detection! Contact Life Line Screening to schedule your screening. Special offer - 5 screenings for just \$149.

MISCELLANEOUS DIAGNOSED WITH LUNG CANCER? You may qualify for a substantial cash award - even with smoking history. NO obligation! We've recovered millions. Let us help!! Call 24/7, 1-888-490-8260. (mcn)

EQUIPMENT CONSIGNMENT AUCTION SATURDAY, JUNE 3RD, 2023 • 10:30 A.M.

Auction Location: Spencer Auction Facility BeeBeeTown
3328 Overton Ave Logan, IA

SALE ORDER: 10:30 A.M. Tools, Fencing Items

Noon: Online Bidding starts

View sale order and bid online at www.spencergroups.com

This is a fantastic line of equipment from numerous consignors. Many very clean, well maintained items! Make plans to attend!

TRACK LOADER: JD 333G, approx. 1700 hours, full cab, heat/ac standard flow hydraulics, new tracks, LED lights, 3 sets of rear weights

JENKINS LOADER ATTACHMENTS: Front mounted Brush Mower 7' like new! 7' Soil Finisher, like new

CAR MOVER

COMBINE: JD 9500 always shedded, good honest combine 70% drive rubber, right rear rubber 20% new left rear rubber

CORN HEAD: JD 693 6R30 plastic snouts, very good condition

PLATFORM: JD 9115

TRACTORS: Kubota MX4700 one owner, 168 hours, 47HP open station, sells complete with Kubota LA844 Loader; JD 4020 only 6 hours on a complete \$18,000 overhaul! Bills furnished!

BACKHOE/TRENCHER: Case DHS Trencher/Backhoe, frost bit chain, runs great!

LAWNMOWERS: JDSRX75 riding mower w/bagger

LIVESTOCK EQUIPMENT: Pearson Cattle Squeeze Chute; Cattle Headgate; 5-Large Porta Hut Shelters, like new; 2 ton Bulk bin, like new; Broyhill Cattle sprayer, 10hp Briggs engine; Priefert Horse Stall

MOWERS: landpride Model 3515-15'cut

MISCELLANEOUS: 1500 gal poly water tank, like new

SPRAYERS: 25' 300 gallon pull type w/pump; 400 gal pull tpe sprayer with Ace pump

BOAT: 1960 Cherokee Aluminum 6 pasenger boat with new floor, motor gone through, new tires on trailer, registration up to date

PICKUP: 1997 Chevy K1500 4 x 4 101,000 miles, 5.7L Vortec 350 good interior, runs and drives, needs driver door bushings

GRINDER/MIXERS: IH; Owatonna

GRAIN CART: Kinze 400bu Grain Cart w/shurlock tarp

GR8IRON AUCTIONS SPENCER AUCTION GROUP

ED SPENCER, AUCTIONEER
LUKE SPENCER
STEVE CHRISTIANSEN
HANNAH SPENCER JOHNSEN
712.644.2151
WWW.SPENCERGROUPO.COM

**GR8 IRON
AUCTIONS**



Elm Crest Senior Living has been proudly serving seniors in the Harlan, Iowa and surrounding Shelby County area for more than 65 years. We encourage you to come work alongside compassionate professionals who care as much as you do.

CURRENT OPENINGS

Housekeeper

Full & Part Time

Maintenance Tech

Full Time

Certified Nursing Assistant

Full & Part Time, variety of shifts

Licensed Practical Nurse (LPN)

or Registered Nurse (RN)

Full & Part Time, variety of shifts

Paid internships available

Dietary Aide

Full & Part Time, variety of shifts

Please visit our website at
www.elmcrest.net/careers or call the facility
(712-755-5174) for more information about
the great job opportunities available.

2104 12th St. in Harlan

712-755-5174



ELM CREST
SENIOR LIVING
COMMUNITY
EEOC

BATH & SHOWER UPDATES in as little as **ONE DAY!** Affordable prices - No payments for 18 months! Lifetime warranty & professional installs. Senior & Military Discounts available. Call 1-866-585-7073. (mcn)

LONG DISTANCE MOVING: Call today for a FREE QUOTE from America's Most Trusted Interstate Movers. Let us take the stress out of moving! Speak to a Relocation Specialist, call 877-327-0795. (mcn)
BATHROOM RENOVATIONS. EASY, ONE DAY updates! We specialize in safe bathing. Grab bars, no slip flooring & seated showers. Call for a free in-home consultation: 855-836-2250. (mcn)

NEED NEW FLOORING? Call Empire Today® to schedule a FREE in-home estimate on Carpeting & Flooring. Call Today! 844-785-0305 (mcn)

NEVER CLEAN YOUR GUTTERS AGAIN! Affordable, professionally installed gutter guards protect your gutters and home from debris and leaves forever! For a FREE Quote call: 877-761-1449 (mcn)

PREPARE FOR POWER OUTAGES today with a GENERAC home standby generator. \$0 Money Down + Low Monthly Payment Options. Request a FREE Quote. Call now before the next power outage: 1-877-228-5789 (mcn)

ELIMINATE GUTTER CLEANING FOREVER! LeafFilter, the most advanced debris-blocking gutter protection. Schedule a FREE LeafFilter estimate today. 20% off Entire Purchase. Plus 10% Senior & Military Discounts. Call 1-855-577-1268. (mcn)

BECOME A PUBLISHED AUTHOR. We want to Read Your Book! Dorrance Publishing-Trusted by Authors Since 1920. Book manuscript submissions

EARLY DEADLINE NOTICE
In observance of Memorial Day, advertising information must reach the Harlan Newspapers by 10 AM Wed., May 24 for the May 30 Rocket.

OFFICE POSITION

Variety Distributors, Inc. in Harlan is seeking a qualified individual to fill a Full-Time Office Position

Skills and Abilities:

- Strong customer service skills
- Strong communication skills and the capability to effectively respond to questions from co-workers, managers, vendors, and customers.
- Strong organizational skills, attention to detail, and the ability to meet deadlines.
- Microsoft Office (Excel, Word, Outlook)
- Strong general clerical functions such as data entry, filing, answering phones.

If interested, please send letter of application and resume to mwiederin@varietydistributors.com or apply in person at 609 7th Street, Harlan, Iowa



EOE

HELP WANTED

Shelby County Road Dept. is seeking to fill the following position:

EQUIPMENT Operator I A

Truck driver position. 40 hrs/week normal.

Experience preferred. Possession of valid Iowa Commercial Driver's License (CDL) with Class A endorsement required. Drug screening, back evaluation and physical required.

**Apply at the Shelby County Engineers Office,
1411 Industrial Pkwy Harlan, IA.
Position open till filled.**

\$50,000,000 in timeshare debt and fees cancelled in 2019. Get free informational package and learn how to get rid of your timeshare! Free consultations. Over 450 positive reviews. Call 877-326-1608. (mcn)

TROUBLE HEARING YOUR TV? Try TV EARS Voice Clarifying Wireless TV Speaker. Better than a soundbar and/or turning the TV volume way up. Special, limited time \$50 off offer. Call TV Ears. Use code MBSP50. Call 1-844-455-0505. (mcn)

ROMAN LEUSCHEN FARM, LLC

REAL ESTATE AUCTION

227.99 ACRES-3 Tracts

SECTION 20 WESTPHALIA TOWNSHIP, SHELBY CO., IA,

WEDNESDAY, JUNE 14TH, 2023 @ 10:00am

SIMULCAST ONLINE BIDDING AVAILABLE DURING LIVE AUCTION

Please go to www.jimschabenrealestate.com for details.

SALE LOCATION: St. Boniface Parish Center, 305 Duren St., Westphalia, Iowa

TRACT 1: 134.882 ACRES

CSR2 66

LEGAL DESCRIPTION: For a copy of the legal description please contact Schaben Real Estate.

FARM LOCATION: From Westphalia, IA for 1 1/4 mile west on F32. The farm is NE of the intersection of F32 and M-16.

PHYSICAL DESCRIPTION: A gently rolling hill farm with 35% of the acres at 1-5% slopes. The farm is bordered on 2 sides by hard surfaced roads.

SOIL TYPES: Monona silty clay loam, Judson-Ackmore-Colo overwash and a small amount of Ida silt loam

TRACT 2: 90.58 ACRES

CSR2 64.8

LEGAL DESCRIPTION: For a copy of the legal description please contact Schaben Real Estate.

FARM LOCATION: From Westphalia go 3/4 mile West on F32. The farm is on the North side of F32.

PHYSICAL DESCRIPTION: A gently rolling hill farm that boasts over 40 of the acres with 1-5% slopes. The farm is in a high state of fertility. The farm is bordered on the South by a hard surfaced road. (F32)

SOIL TYPES: Monona silty clay loam, Judson-Ackmore-Colo overwash and a small amount of Ida silt loam

FSA INFORMATION ON TRACTS 1&2: Farm #: 2102 Tract #2076

Farmland: 229.02 acres Cropland: 224.30 Acres

Corn Base Acres: 221.2 Acres Corn Yield: 157 Bu.

These 2 tracts have been farmed as a single unit. The FSA information is based on that single unit. It will be up to the FSA to allocate the base and yield figures on each tract. Typically it will be prorated by percentage of tillable acres on each tract.

TRACT 3: 2.528 ACRES

CSR2 58.2

LEGAL DESCRIPTION: For a copy of the legal description please contact Schaben Real Estate.

FARM LOCATION: 815 1580th St. Earling, Iowa- From Westphalia: 1 1/4 mile West of F32 then 3/4 mile North on M16 then 1/4 mile East. Acreage is on the South side of the road

PHYSICAL DESCRIPTION: 1 1/2 story four bedroom home that has 1726 Sq Ft of living space. Property includes a 50 X 100' steel machine shed built in 1987, an older machine shed, three grain bins totaling 38,500 bushels. Property is in the Harlan School District and is on rural water.

For a private showing please contact Schaben Real Estate.

TAXES: Taxes on entire property are \$8,064.00 (Includes buildings)

TERMS: At the conclusion of the auction the buyer(s) will be asked to sign a Real Estate Contract putting 15 percent of the sale price in escrow with Marcus Gross Attor ney. Balance of the funds will be due and payable on or before closing on July 18th, 2023. Sellers will furnish buyer(s) with abstract showing marketable title and deed. Taxes will be prorated to closing date and paid by sellers.

CASH RENT: Buyer(s) share of 2023 Cash Rent: \$31156.00 to be paid October 1, 2023. This will be allocated to tracts 1 & 2 based on percentage of tillable acres.

CLOSING DATE: On or before July 18, 2023.

POSSESSION: New buyer(s) will have full landlord(s) possession at time of closing, will receive 50% of the 2023 cash rent and full farming rights for crop year 2024.

ADDITIONAL CONDITIONS: Property is being sold "as is" subject to any current right-of-ways or easements. All information has been gathered from sources deemed reliable, however neither Roman Leuschen Farm, LLC nor Schaben Real Estate, LLC makes any guarantees, either expressed or implied, as to their accuracy. It is the responsibility of the buyer(s) to exercise due diligence to verify any and all figures. Any announcements made day of sale take precedence over printed material. All bidding Increments are at the discretion of Schaben Real Estate, LLC. Successful bidder(s) will enter into a purchase agreement contract at the conclusion of the auction. Sale is not contingent on Buyer(s)' financing.

AGENCY DISCLOSURE: Schaben Real Estate, LLC represents the seller in this transaction. Marcus Gross is the attorney for Roman Leuschen Farm, LLC.

SALE MANAGERS NOTES: The Leuschen farm has so many great attributes...Location, great CSR's, long crop rows, high fertility, and located by hard surfaced roads. This property truly checks all the boxes. Please take a look and call if you have any questions or would like to have a private look at the acreage. For more info contact Jim Schaben at 712-263-9449.



SCHABEN REAL ESTATE, LLC

JAY SCHABEN, BROKER-CO-OWNER, JIM SCHABEN JR.-CO-OWNER,
ALAN FARA, SUSIE SOHM, RON STEINHOFF, BOB SCHMITZ, ELIZABETH HEISTAND
701 Hwy 30 West, Dunlap, IA 51529 712-643-2350

www.jimschabenrealestate.com

Closing Attorney: Marcus Gross

Business Spotlight

Harlan Tribune • News-Advertiser • Rocket Call us today at **800-909-6397 • 712-755-3111**
Reach Over 13,000 Readers 4 Times Every Month for Only \$49!



Need Some EXTRA Storage Space?

R & S WASTE DISPOSAL INC.
DEFIANCE, IOWA
712-748-3471

Ready Storage Mobile Storage Containers

- Water Tight And Lockable
- Great For Remodel Projects
- Delivered To The Customer

www.rswaste.com



ODD JOBS!!!
MAINTENANCE, CARPENTRY WORK, HAULING, ODD JOBS, PAINTING, SNOW, MULCH, ROCK, LANDSCAPING, AND JUST CALL TO SEE WE CAN HELP YOU!!

ROBERT RAU
712-355-8291



COMPLETE AUTOMOTIVE
712-489-2443

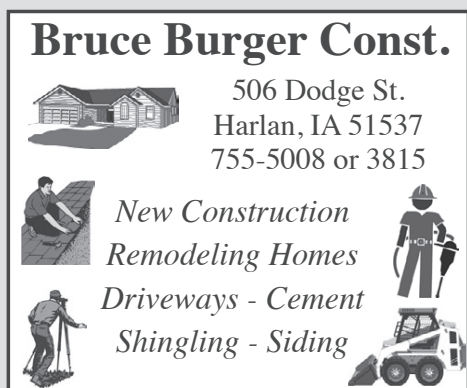
- Diagnostic and repair of all makes and models
- Diesel pickup repairs of Cummins, Powerstroke and Duramax
- Engine and transmission repair and replacement
- Tires, brakes and tune-ups
- General auto repairs and alignments

Corey Freund and Jacob Bruck
203 South Railway, Panama, IA 51562
HOURS: M-F 7:30 am- 5:30 pm

Bruce Burger Const.

506 Dodge St.
Harlan, IA 51537
755-5008 or 3815

*New Construction
Remodeling Homes
Driveways - Cement
Shingling - Siding*



It's your future.
Let's protect it.

Heath Stein
Agent

FARM BUREAU FINANCIAL SERVICES

1113 7th St. Ste 101
Harlan, IA 51537
Heath.Stein@fbfs.com
heathstein.fbfsagents.com

712.235.3040 | 712.579.9398 cell | 712.733.8020 fax

We've Kept You Rolling For Over 25 Years

EXPRESS LUBE & TIRE, LLC
Service That's Fast!
712-755-3663
HWY 44 • HARLAN




103 Main Street Persia, IA
Cold beer and tasty pies. Pizza it's what we do.
Follow us on Facebook or call 712-488-8807 for current hours and specials.
We look forward to serving you and appreciate your business!

712-579-1816

PREMIER PORTABLE BUILDINGS

TOTAL CONTRACTING
Gilbert Ahrenholtz
2002 Chatburn Ave., Harlan, IA
gilbert@hotmail.com



Handyman for Hire

Kingwood Services, LLC
Harlan, Iowa

*Licensed Electrician; Insured;
No Job Too Small.*

Lanny Petsche, Owner
lanny@fmctc.com
712-579-8469

Computer Trouble? Bring it in!

Ask what our SOS Internet Team can do for you!

FMCTC
Your Total Communications Provider

Farmers Mutual Cooperative Telephone Company
Telephone • Wireless Internet • Cable TV
801 19th St.
Harlan, IA • (712)744-3131
www.fmctc.com



Alpha & Omega

Q A

- Flooring • Cabinets
- Counter Tops & Sinks

712-755-9985

For ALL Your Auction Needs!

OSBORN AUCTION LLC
Mitch Osborn, Auctioneer
HARLAN, IA • 712-579-4824

John Clayton, Auctioneer • Walnut, IA • 712-249-1024
Curtis Osborn, Auctioneer • Shenandoah, IA • 712-246-8722
www.osbornauktion.com
Household • Antique • Farm • Land



24-Hour Towing & Recovery
CHADWICK TOWING

- Wrecker & Roll-Back • Unlocks
- Junk Cars • Most Hauling Needs

712-755-5053 • 712-579-9244
Harlan, Iowa



Goettsch Excavating, LLC

- Chain Trencher Track Tiling Machine w/GPS installs 4" - 12" tile, up to 8' deep
- PC 220 Excavator and Mini Excavator PC78 w/thumb

Tiling, Excavating, Dozer, Demolition, Tree clearing
Jeff - 402-680-0750

READY TO ADVERTISE ON THE BUSINESS SPOTLIGHT

ONLY \$49 FOR 4 ADS!

- Harlan Tribune
- News-Advertiser • Rocket

800-909-6397 • 712-755-3111



CARS • CARS • CARS • CARS • CARS • CARS • CARS • CARS • CARS • CARS

FEATURE of the week

**2021 Tesla Model 3
Performance**
#22168A
\$51,995



CROSSOVERS • SUVs • VANS • CROSSOVERS • SUVs • VANS • CROSSOVERS • SUVs • VANS

**2021 Ford Escape
SE, #3492**



\$27,995

**2020 Ford Escape
SE, #3493**



\$26,995

**2020 Ford Escape
SE, #3398**



\$23,995

**2019 Ford Escape
SE, #22259A**



\$20,995

FEATURE of the week



2019 Buick Enclave
Avenir, #23005A
\$40,995

**2015 Ford Explorer
Limited, # 3470A**



\$14,995

**2019 Ford Edge
SEL, SUV, #3494**



\$23,995

**2019 Chevy Blazer
LT, #22160A**



\$27,995

**2016 Chevy Tahoe
LT, #23085B**



\$29,495

TRUCKS • TRUCKS • TRUCKS • TRUCKS • TRUCKS • TRUCKS • TRUCKS • TRUCKS • TRUCKS • TRUCKS

FEATURE of the week



2021 Ford F-250 XLT
Crew Cab, #22206A
\$57,995

**2022 Jeep
Gladiator Sport, #22186B**



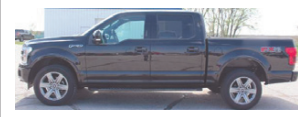
\$44,995

**2020 Chevy Silverado
RST, #22211A**



\$Please call

**2019 Ford F-150
Crew Cab Lariat 4x4, #3501**



\$45,995

**2018 Ford F-150 Lariat
Crew Cab, #22222A**



\$37,995

**2017 Ford F-350
Platinum, Crew Cab, #22205B**



\$62,995

**2017 Ford F-150
Platinum Crew Cab, #22200A**



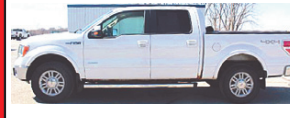
\$34,995

**2014 Ford F-150
Crew Cab, Lariat 4x2, #3464A**



\$23,995

**2013 Ford F-150 Lariat
Crew Cab, #22015B**



\$13,495

OUR SALES STAFF IS WAITING TO ASSIST YOU



Jim Chance



Steve Keast



Brandon Brink



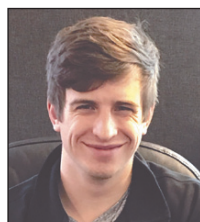
Walt Keast



Greg Roecker



Kirk Jacobsen



Tim Brink

KEAST AUTO CENTER HARLAN, IOWA

Call (712) 755-2116 or 800-234-4927 • Open: Mon. & Thurs. 7:30 am-8 pm; Tues., Wed. & Fri. 7:30 am-5:30 pm;
Sat. 7:30 am-4 pm; view online at: keastford.com • keastchevybuickgmc.com • keastautocenter.com